

ARG56934 anti-Maltose Binding Protein antibody [10C12]

Package: 50 µl
Store at: -20°C

Summary

Product Description	Mouse Monoclonal antibody [10C12] recognizes Maltose Binding Protein
Tested Reactivity	E. coli
Tested Application	WB
Host	Mouse
Clonality	Monoclonal
Clone	10C12
Isotype	IgG1, kappa
Target Name	Maltose Binding Protein
Species	E. coli
Immunogen	Recombinant Maltose Binding Protein purified from E. coli.
Conjugation	Un-conjugated
Alternate Names	ECK4026; JW3994; malJ

Application Instructions

Application table	Application	Dilution
	WB	1:1000 - 1:2000
Application Note	* The dilutions indicate recommended starting dilutions and the optimal dilutions or concentrations should be determined by the scientist.	

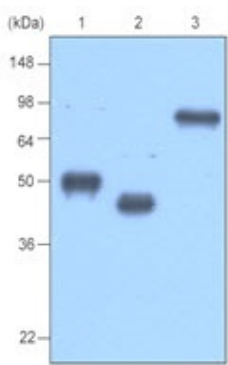
Properties

Form	Liquid
Purification	Purification with Protein G.
Buffer	PBS (pH 7.4), 0.02% Sodium azide and 10% Glycerol.
Preservative	0.02% Sodium azide
Stabilizer	10% Glycerol
Concentration	1 mg/ml
Storage instruction	For continuous use, store undiluted antibody at 2-8°C for up to a week. For long-term storage, aliquot and store at -20°C. Storage in frost free freezers is not recommended. Avoid repeated freeze/thaw cycles. Suggest spin the vial prior to opening. The antibody solution should be gently mixed before use.
Note	For laboratory research only, not for drug, diagnostic or other use.

Bioinformation

Gene Symbol	malE
Gene Full Name	maltose transporter subunit
Background	Biofilm microarray result was validated with RT-PCR. [More information is available at EcoGene: EG10554]. In addition to being the periplasmic substrate-binding component of the maltose ABC transporter, MalE with bound substrate is also able to bind to the chemoreceptor Tar to induce chemotaxis toward maltose. [More information is available at EcoCyc: EG10554].
Function	Involved in the high-affinity maltose membrane transport system MalEFGK. Initial receptor for the active transport of and chemotaxis toward maltooligosaccharides. [UniProt]
Calculated Mw	43 kDa

Images



ARG56934 anti-Maltose Binding Protein antibody [10C12] WB image

Western blot: 20 ng of MBP-tagged 1) BCDEF, 2) TPD52 and, 3) MAGEA3 stained with ARG56934 anti-Maltose Binding Protein antibody [10C12] at 1:1000.