

ARG56936 anti-ApoJ / Clusterin antibody [1A11]

Package: 50 µl
Store at: -20°C

Summary

Product Description	Mouse Monoclonal antibody [1A11] recognizes ApoJ / Clusterin
Tested Reactivity	Hu
Tested Application	FACS, ICC/IF, IHC-P, WB
Host	Mouse
Clonality	Monoclonal
Clone	1A11
Isotype	IgG1, kappa
Target Name	ApoJ / Clusterin
Species	Human
Immunogen	Recombinant fragment around aa. 1-333 of Human Clusterin.
Conjugation	Un-conjugated
Alternate Names	Clusterin; Apolipoprotein J; SGP-2; SP-40; APOJ; ApoJbeta; CLU2; CLU1; NA1/NA2; TRPM2; CLI; SGP2; Apo-J; TRPM-2; ApoJalpha; Aging-associated gene 4 protein; APO-J; Complement cytolysis inhibitor a chain; Ku70-binding protein 1; Complement cytolysis inhibitor b chain; Testosterone-repressed prostate message 2; Complement-associated protein SP-40,40; KUB1; AAG4; Complement cytolysis inhibitor

Application Instructions

Application table	Application	Dilution
	FACS	Assay-dependent
	ICC/IF	Assay-dependent
	IHC-P	1:100
	WB	1:500 - 1:2000
Application Note	IHC-P: Antigen Retrieval: Boil tissue section in 0.1M Sodium citrate buffer (pH 6.0) for 20 min. * The dilutions indicate recommended starting dilutions and the optimal dilutions or concentrations should be determined by the scientist.	

Properties

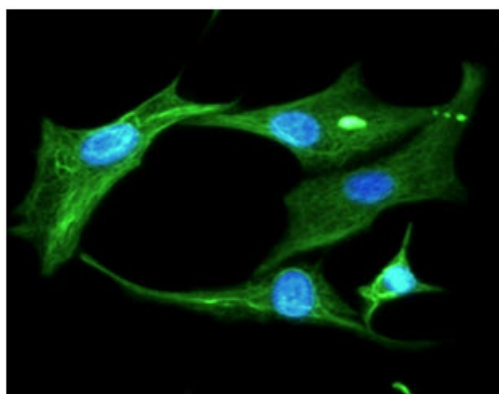
Form	Liquid
Purification	Purification with Protein G.
Buffer	PBS (pH 7.4), 0.02% Sodium azide and 10% Glycerol.
Preservative	0.02% Sodium azide
Stabilizer	10% Glycerol

Concentration	1 mg/ml
Storage instruction	For continuous use, store undiluted antibody at 2-8°C for up to a week. For long-term storage, aliquot and store at -20°C. Storage in frost free freezers is not recommended. Avoid repeated freeze/thaw cycles. Suggest spin the vial prior to opening. The antibody solution should be gently mixed before use.
Note	For laboratory research only, not for drug, diagnostic or other use.

Bioinformation

Database links	GeneID: 1191 Human Swiss-port # P10909 Human
Gene Symbol	CLU
Gene Full Name	clusterin
Background	The protein encoded by this gene is a secreted chaperone that can under some stress conditions also be found in the cell cytosol. It has been suggested to be involved in several basic biological events such as cell death, tumor progression, and neurodegenerative disorders. Alternate splicing results in both coding and non-coding variants.[provided by RefSeq, May 2011]
Function	Isoform 1 functions as extracellular chaperone that prevents aggregation of nonnative proteins. Prevents stress-induced aggregation of blood plasma proteins. Inhibits formation of amyloid fibrils by APP, APOC2, B2M, CALCA, CSN3, SNCA and aggregation-prone LYZ variants (in vitro). Does not require ATP. Maintains partially unfolded proteins in a state appropriate for subsequent refolding by other chaperones, such as HSPA8/HSC70. Does not refold proteins by itself. Binding to cell surface receptors triggers internalization of the chaperone-client complex and subsequent lysosomal or proteasomal degradation. Secreted isoform 1 protects cells against apoptosis and against cytolysis by complement. Intracellular isoforms interact with ubiquitin and SCF (SKP1-CUL1-F-box protein) E3 ubiquitin-protein ligase complexes and promote the ubiquitination and subsequent proteasomal degradation of target proteins. Promotes proteasomal degradation of COMMD1 and IKBKB. Modulates NF-kappa-B transcriptional activity. Nuclear isoforms promote apoptosis. Mitochondrial isoforms suppress BAX-dependent release of cytochrome c into the cytoplasm and inhibit apoptosis. Plays a role in the regulation of cell proliferation. [UniProt]
Calculated Mw	52 kDa
PTM	Isoform 1 is proteolytically cleaved on its way through the secretory system, probably within the Golgi lumen. Polyubiquitinated, leading to proteasomal degradation. Heavily N-glycosylated. About 30% of the protein mass is comprised of complex N-linked carbohydrate.

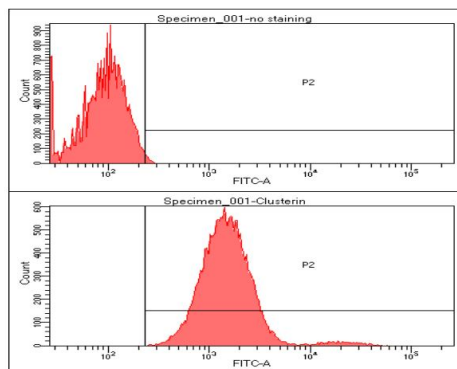
Images



ARG56936 anti-ApoJ / Clusterin antibody [1A11] ICC/IF image

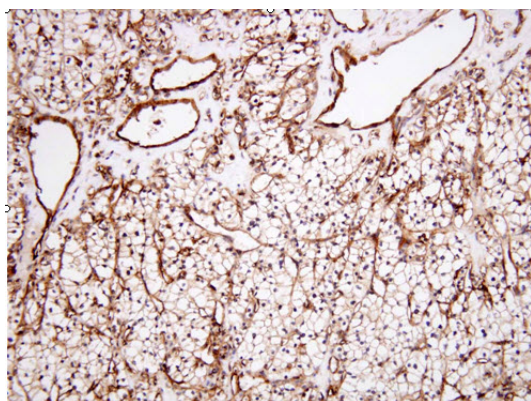
Immunofluorescence: U87MG cell line stained with ARG56936 anti-ApoJ / Clusterin antibody [1A11] at 1:100 (Green).

DAPI (Blue) for nucleus staining.



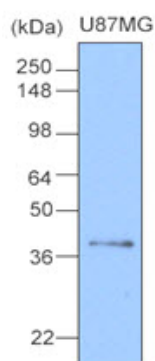
ARG56936 anti-ApoJ / Clusterin antibody [1A11] FACS image

Flow Cytometry: U87MG cell line stained with ARG56936 anti-ApoJ / Clusterin antibody [1A11] at 2-5 μ g for 1×10^6 cells. Secondary antibody: Goat anti-Mouse IgG Alexa fluor 488 conjugate.



ARG56936 anti-ApoJ / Clusterin antibody [1A11] IHC-P image

Immunohistochemistry: Paraffin embedded sections of Human renal cell carcinoma tissue stained with ARG56936 anti-ApoJ / Clusterin antibody [1A11] at 1:100 for 2 hours at RT. Antigen Retrieval: Boil tissue section in 0.1M Sodium citrate buffer (pH 6.0) for 20 min.



ARG56936 anti-ApoJ / Clusterin antibody [1A11] WB image

Western blot: 20 μ g of U87MG stained with ARG56936 anti-ApoJ / Clusterin antibody [1A11] at 1:1000.