

ARG56957 anti-CPI17 antibody [4H10]

Package: 50 µl
Store at: -20°C

Summary

Product Description	Mouse Monoclonal antibody [4H10] recognizes CPI17
Tested Reactivity	Hu
Tested Application	ICC/IF, WB
Host	Mouse
Clonality	Monoclonal
Clone	4H10
Isotype	IgG2a, kappa
Target Name	CPI17
Species	Human
Immunogen	Recombinant fragment around aa. 1-147 of Human CPI-17.
Conjugation	Un-conjugated
Alternate Names	CPI-17; Protein kinase C-potentiated inhibitor protein of 17 kDa; CPI17; 17 kDa PKC-potentiated inhibitory protein of PP1; PPP1INL; Protein phosphatase 1 regulatory subunit 14A

Application Instructions

Application table	Application	Dilution
	ICC/IF	Assay-dependent
	WB	1:500 - 1:1000
Application Note	* The dilutions indicate recommended starting dilutions and the optimal dilutions or concentrations should be determined by the scientist.	

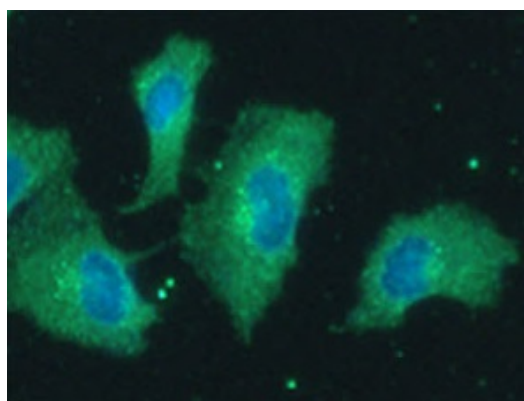
Properties

Form	Liquid
Purification	Purification with Protein G.
Buffer	PBS (pH 7.4), 0.02% Sodium azide and 10% Glycerol.
Preservative	0.02% Sodium azide
Stabilizer	10% Glycerol
Concentration	1 mg/ml
Storage instruction	For continuous use, store undiluted antibody at 2-8°C for up to a week. For long-term storage, aliquot and store at -20°C. Storage in frost free freezers is not recommended. Avoid repeated freeze/thaw cycles. Suggest spin the vial prior to opening. The antibody solution should be gently mixed before use.
Note	For laboratory research only, not for drug, diagnostic or other use.

Bioinformation

Database links	GeneID: 94274 Human Swiss-port # Q96A00 Human
Gene Symbol	PPP1R14A
Gene Full Name	protein phosphatase 1, regulatory (inhibitor) subunit 14A
Background	The protein encoded by this gene belongs to the protein phosphatase 1 (PP1) inhibitor family. This protein is an inhibitor of smooth muscle myosin phosphatase, and has higher inhibitory activity when phosphorylated. Inhibition of myosin phosphatase leads to increased myosin phosphorylation and enhanced smooth muscle contraction. Alternatively spliced transcript variants encoding different isoforms have been noted for this gene. [provided by RefSeq, Sep 2011]
Function	Inhibitor of PPP1CA. Has over 1000-fold higher inhibitory activity when phosphorylated, creating a molecular switch for regulating the phosphorylation status of PPP1CA substrates and smooth muscle contraction. [UniProt]
Calculated Mw	17 kDa

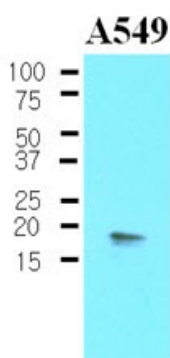
Images



ARG56957 anti-CPI17 antibody [4H10] ICC/IF image

Immunofluorescence: A549 cell line stained with ARG56957 anti-CPI17 antibody [4H10] at 1:100 (Green).

DAPI (Blue) for nucleus staining.



ARG56957 anti-CPI17 antibody [4H10] WB image

Western blot: 40 µg of 1) A549 cell lysate, 2) NIH-3T3 cell lysate stained with ARG56957 anti-CPI17 antibody [4H10] at 1:500.