

ARG57028 anti-SSR2 antibody [31G6]

Package: 50 µl
Store at: -20°C

Summary

Product Description	Mouse Monoclonal antibody [31G6] recognizes SSR2
Tested Reactivity	Hu
Tested Application	WB
Host	Mouse
Clonality	Monoclonal
Clone	31G6
Isotype	IgG1, kappa
Target Name	SSR2
Species	Human
Immunogen	Recombinant fragment around aa. 18-149 of Human SSR2.
Conjugation	Un-conjugated
Alternate Names	Signal sequence receptor subunit beta; SSR-beta; TRAP-BETA; HSD25; TRAP-beta; Translocon-associated protein subunit beta; TRAPB; TLAP

Application Instructions

Application table	Application	Dilution
	WB	1:500
Application Note	* The dilutions indicate recommended starting dilutions and the optimal dilutions or concentrations should be determined by the scientist.	

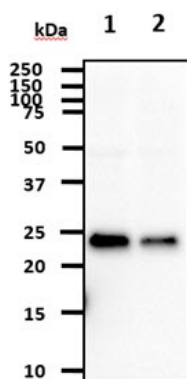
Properties

Form	Liquid
Purification	Purification with Protein A.
Buffer	PBS (pH 7.4), 0.02% Sodium azide and 10% Glycerol.
Preservative	0.02% Sodium azide
Stabilizer	10% Glycerol
Concentration	1 mg/ml
Storage instruction	For continuous use, store undiluted antibody at 2-8°C for up to a week. For long-term storage, aliquot and store at -20°C. Storage in frost free freezers is not recommended. Avoid repeated freeze/thaw cycles. Suggest spin the vial prior to opening. The antibody solution should be gently mixed before use.
Note	For laboratory research only, not for drug, diagnostic or other use.

Bioinformation

Database links	GeneID: 6746 Human Swiss-port # P43308 Human
Gene Symbol	SSR2
Gene Full Name	signal sequence receptor, beta (translocon-associated protein beta)
Background	The signal sequence receptor (SSR) is a glycosylated endoplasmic reticulum (ER) membrane receptor associated with protein translocation across the ER membrane. The SSR consists of 2 subunits, a 34-kD glycoprotein (alpha-SSR or SSR1) and a 22-kD glycoprotein (beta-SSR or SSR2). The human beta-signal sequence receptor gene (SSR2) maps to chromosome bands 1q21-q23. [provided by RefSeq, Jul 2008]
Function	TRAP proteins are part of a complex whose function is to bind calcium to the ER membrane and thereby regulate the retention of ER resident proteins. [UniProt]
Calculated Mw	20 kDa

Images



ARG57028 anti-SSR2 antibody [31G6] WB image

Western blot: 40 µg of 1) HeLa cell lysate, 2) Jurkat cell lysate stained with ARG57028 anti-SSR2 antibody [31G6] at 1:1000.