

ARG57030 anti-SSR4 antibody [26G5]

Package: 50 µl
Store at: -20°C

Summary

Product Description	Mouse Monoclonal antibody [26G5] recognizes SSR4
Tested Reactivity	Hu
Tested Application	WB
Host	Mouse
Clonality	Monoclonal
Clone	26G5
Isotype	IgG1, kappa
Target Name	SSR4
Species	Human
Immunogen	Recombinant fragment around aa. 24-144 of Human SSR4.
Conjugation	Un-conjugated
Alternate Names	SSR-delta; Translocon-associated protein subunit delta; CDG1Y; Signal sequence receptor subunit delta; TRAPD; TRAP-delta

Application Instructions

Application table	Application	Dilution
	WB	1:1000
Application Note	* The dilutions indicate recommended starting dilutions and the optimal dilutions or concentrations should be determined by the scientist.	

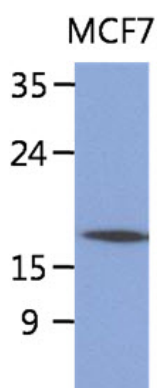
Properties

Form	Liquid
Purification	Purification with Protein A.
Buffer	PBS (pH 7.4), 0.02% Sodium azide and 10% Glycerol.
Preservative	0.02% Sodium azide
Stabilizer	10% Glycerol
Concentration	1 mg/ml
Storage instruction	For continuous use, store undiluted antibody at 2-8°C for up to a week. For long-term storage, aliquot and store at -20°C. Storage in frost free freezers is not recommended. Avoid repeated freeze/thaw cycles. Suggest spin the vial prior to opening. The antibody solution should be gently mixed before use.
Note	For laboratory research only, not for drug, diagnostic or other use.

Bioinformation

Database links	GeneID: 6748 Human Swiss-port # P51571 Human
Gene Symbol	SSR4
Gene Full Name	signal sequence receptor, delta
Background	This gene encodes the delta subunit of the translocon-associated protein complex which is involved in translocating proteins across the endoplasmic reticulum membrane. The encoded protein is located in the Xq28 region and is arranged in a compact head-to-head manner with the isocitrate dehydrogenase 3 (NAD+) gamma gene and both genes are driven by a CpG-embedded bidirectional promoter. Alternate splicing results in multiple transcript variants.[provided by RefSeq, Mar 2011]
Function	TRAP proteins are part of a complex whose function is to bind calcium to the ER membrane and thereby regulate the retention of ER resident proteins. [UniProt]
Calculated Mw	19 kDa

Images



ARG57030 anti-SSR4 antibody [26G5] WB image

Western blot: 40 µg of MCF7 cell lysate stained with ARG57030 anti-SSR4 antibody [26G5] at 1:1000.