

## ARG57052 anti-DUSP3 antibody [9E6]

Package: 50 µl  
Store at: -20°C

### Summary

Product Description	Mouse Monoclonal antibody [9E6] recognizes DUSP3
Tested Reactivity	Hu
Tested Application	WB
Host	Mouse
Clonality	Monoclonal
Clone	9E6
Isotype	IgG2b, kappa
Target Name	DUSP3
Species	Human
Immunogen	Recombinant fragment around aa. 1-185 of Human DUSP3.
Conjugation	Un-conjugated
Alternate Names	EC 3.1.3.16; Vaccinia H1-related phosphatase; Dual specificity protein phosphatase 3; EC 3.1.3.48; VHR; Dual specificity protein phosphatase VHR

### Application Instructions

Application table	Application	Dilution
	WB	1:3000
Application Note	* The dilutions indicate recommended starting dilutions and the optimal dilutions or concentrations should be determined by the scientist.	

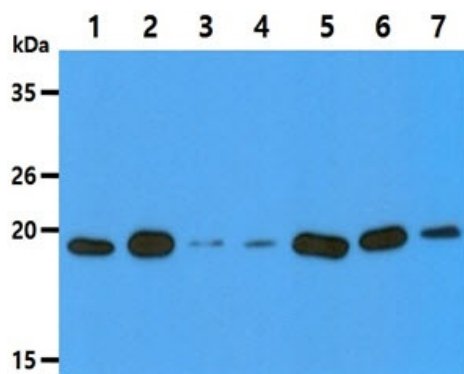
### Properties

Form	Liquid
Purification	Purification with Protein A.
Buffer	PBS (pH 7.4), 0.02% Sodium azide and 10% Glycerol.
Preservative	0.02% Sodium azide
Stabilizer	10% Glycerol
Concentration	1 mg/ml
Storage instruction	For continuous use, store undiluted antibody at 2-8°C for up to a week. For long-term storage, aliquot and store at -20°C. Storage in frost free freezers is not recommended. Avoid repeated freeze/thaw cycles. Suggest spin the vial prior to opening. The antibody solution should be gently mixed before use.
Note	For laboratory research only, not for drug, diagnostic or other use.

## Bioinformation

Database links	<a href="#">GeneID: 1845 Human</a> <a href="#">Swiss-port # P51452 Human</a>
Gene Symbol	DUSP3
Gene Full Name	dual specificity phosphatase 3
Background	<p>The protein encoded by this gene is a member of the dual specificity protein phosphatase subfamily. These phosphatases inactivate their target kinases by dephosphorylating both the phosphoserine/threonine and phosphotyrosine residues. They negatively regulate members of the mitogen-activated protein (MAP) kinase superfamily (MAPK/ERK, SAPK/JNK, p38), which are associated with cellular proliferation and differentiation. Different members of the family of dual specificity phosphatases show distinct substrate specificities for various MAP kinases, different tissue distribution and subcellular localization, and different modes of inducibility of their expression by extracellular stimuli. This gene maps in a region that contains the BRCA1 locus which confers susceptibility to breast and ovarian cancer. Although DUSP3 is expressed in both breast and ovarian tissues, mutation screening in breast cancer pedigrees and in sporadic tumors was negative, leading to the conclusion that this gene is not BRCA1. [provided by RefSeq, Jul 2008]</p>
Function	<p>Shows activity both for tyrosine-protein phosphate and serine-protein phosphate, but displays a strong preference toward phosphotyrosines. Specifically dephosphorylates and inactivates ERK1 and ERK2. [UniProt]</p>
Calculated Mw	20 kDa

## Images



ARG57052 anti-DUSP3 antibody [9E6] WB image

Western blot: 40 µg of 1) HeLa cell lysate, 2) HepG2 cell lysate, 3) Jurkat cell lysate, 4) MCF7 cell lysate, 5) 293T cell lysate, 6) U87MG cell lysate, 7) K562 cell lysate stained with ARG57052 anti-DUSP3 antibody [9E6] at 1:3000.