

ARG57075 anti-CDC37 antibody [3G7]

Package: 50 µl
Store at: -20°C

Summary

Product Description	Mouse Monoclonal antibody [3G7] recognizes CDC37
Tested Reactivity	Hu
Tested Application	WB
Host	Mouse
Clonality	Monoclonal
Clone	3G7
Isotype	IgG1, kappa
Target Name	CDC37
Species	Human
Immunogen	Recombinant fragment around aa. 1-378 of Human Cdc37.
Conjugation	Un-conjugated
Alternate Names	p50Cdc37; Hsp90 chaperone protein kinase-targeting subunit; Hsp90 co-chaperone Cdc37; P50CDC37

Application Instructions

Application table	Application	Dilution
	WB	Assay-dependent
Application Note	* The dilutions indicate recommended starting dilutions and the optimal dilutions or concentrations should be determined by the scientist.	

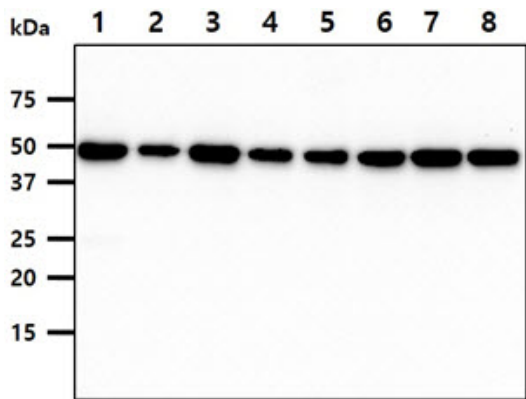
Properties

Form	Liquid
Purification	Purification with Protein A.
Buffer	PBS (pH 7.4), 0.02% Sodium azide and 10% Glycerol.
Preservative	0.02% Sodium azide
Stabilizer	10% Glycerol
Concentration	1 mg/ml
Storage instruction	For continuous use, store undiluted antibody at 2-8°C for up to a week. For long-term storage, aliquot and store at -20°C. Storage in frost free freezers is not recommended. Avoid repeated freeze/thaw cycles. Suggest spin the vial prior to opening. The antibody solution should be gently mixed before use.
Note	For laboratory research only, not for drug, diagnostic or other use.

Bioinformation

Database links	GeneID: 11140 Human Swiss-port # Q16543 Human
Gene Symbol	CDC37
Gene Full Name	cell division cycle 37
Background	The protein encoded by this gene is highly similar to Cdc 37, a cell division cycle control protein of <i>Sacchomyces cerevisiae</i> . This protein is a molecular chaperone with specific function in cell signal transduction. It has been shown to form complex with Hsp90 and a variety of protein kinases including CDK4, CDK6, SRC, RAF-1, MOK, as well as eIF2 alpha kinases. It is thought to play a critical role in directing Hsp90 to its target kinases. [provided by RefSeq, Jul 2008]
Function	Co-chaperone that binds to numerous kinases and promotes their interaction with the Hsp90 complex, resulting in stabilization and promotion of their activity. [UniProt]
Calculated Mw	44 kDa
PTM	Constitutively sumoylated by UBE2I.

Images



ARG57075 anti-CDC37 antibody [3G7] WB image

Western blot: 40 µg of 1) Jurkat cell lysate, 2) A431 cell lysate, 3) K562 cell lysate, 4) LnCap cell lysate, 5) SW480 cell lysate, 6) HeLa cell lysate, 7) MCF7 cell lysate, 8) 293T cell lysate stained with ARG57075 anti-CDC37 antibody [3G7] at 1:1000.