

ARG57077 anti-PPA1 / Pyrophosphatase antibody [4G4]

Package: 50 µl
Store at: -20°C

Summary

Product Description	Mouse Monoclonal antibody [4G4] recognizes PPA1 / Pyrophosphatase
Tested Reactivity	Hu
Tested Application	FACS, WB
Host	Mouse
Clonality	Monoclonal
Clone	4G4
Isotype	IgG2b, lambda
Target Name	PPA1 / Pyrophosphatase
Species	Human
Immunogen	Recombinant fragment around aa. 1-289 of Human PPA1 / Pyrophosphatase.
Conjugation	Un-conjugated
Alternate Names	PP; IOPPP; Inorganic pyrophosphatase; PPase; PP1; SID6-8061; EC 3.6.1.1; Pyrophosphate phospho-hydrolase; HEL-S-66p

Application Instructions

Application table	Application	Dilution
	FACS	Assay-dependent
	WB	Assay-dependent
Application Note	* The dilutions indicate recommended starting dilutions and the optimal dilutions or concentrations should be determined by the scientist.	

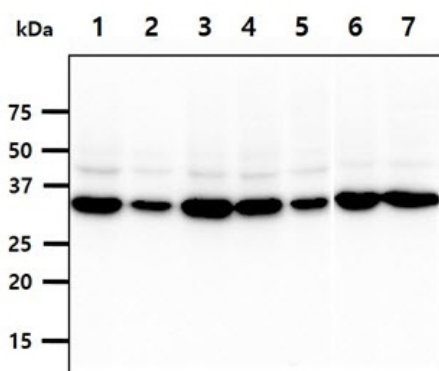
Properties

Form	Liquid
Purification	Purification with Protein A.
Buffer	PBS (pH 7.4), 0.02% Sodium azide and 10% Glycerol.
Preservative	0.02% Sodium azide
Stabilizer	10% Glycerol
Concentration	1 mg/ml
Storage instruction	For continuous use, store undiluted antibody at 2-8°C for up to a week. For long-term storage, aliquot and store at -20°C. Storage in frost free freezers is not recommended. Avoid repeated freeze/thaw cycles. Suggest spin the vial prior to opening. The antibody solution should be gently mixed before use.
Note	For laboratory research only, not for drug, diagnostic or other use.

Bioinformation

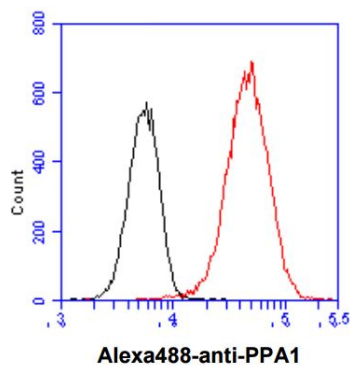
Database links	GeneID: 5464 Human Swiss-port # Q15181 Human
Gene Symbol	PPA1
Gene Full Name	pyrophosphatase (inorganic) 1
Background	The protein encoded by this gene is a member of the inorganic pyrophosphatase (PPase) family. PPases catalyze the hydrolysis of pyrophosphate to inorganic phosphate, which is important for the phosphate metabolism of cells. Studies of a similar protein in bovine suggested a cytoplasmic localization of this enzyme. [provided by RefSeq, Jul 2008]
Calculated Mw	33 kDa

Images



ARG57077 anti-PPA1 / Pyrophosphatase antibody [4G4] WB image

Western blot: 40 µg of 1) HeLa cell lysate, 2) A431 cell lysate, 3) 293T cell lysate, 4) HepG2 cell lysate, 5) U87MG cell lysate, 6) PC3 cell lysate, 7) WiDr cell lysate stained with ARG57077 anti-PPA1 / Pyrophosphatase antibody [4G4] at 1:1000.



ARG57077 anti-PPA1 / Pyrophosphatase antibody [4G4] FACS image

Flow Cytometry: HeLa cell line stained with ARG57077 anti-PPA1 / Pyrophosphatase antibody [4G4] at 2-5 µg for 1×10^6 cells (red line). Secondary antibody: Goat anti-Mouse IgG Alexa fluor 488 conjugate. Isotype control antibody was Mouse IgG (black line).