

ARG57108 anti-Ras (pan) antibody [2G9]

Package: 50 µl
Store at: -20°C

Summary

Product Description	Mouse Monoclonal antibody [2G9] recognizes Ras (pan)
Tested Reactivity	Hu
Tested Application	FACS, WB
Host	Mouse
Clonality	Monoclonal
Clone	2G9
Isotype	IgG2a, kappa
Target Name	Ras (pan)
Species	Human
Immunogen	Recombinant fragment around aa. 1-186 of Human Ras (pan)
Conjugation	Un-conjugated
Alternate Names	GTPase NRas; N-ras; NRAS1; CMNS; Transforming protein N-Ras; NCMS; ALPS4; NS6

Application Instructions

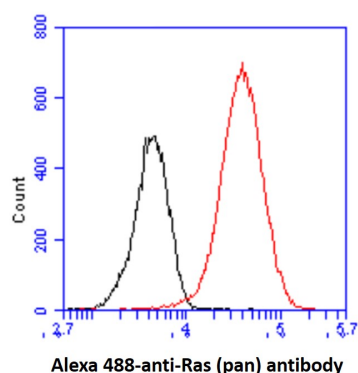
Application table	Application	Dilution
	FACS	Assay-dependent
	WB	1:500 - 1:5000
Application Note	* The dilutions indicate recommended starting dilutions and the optimal dilutions or concentrations should be determined by the scientist.	

Properties

Form	Liquid
Purification	Purification with Protein G.
Buffer	PBS (pH 7.4), 0.02% Sodium azide and 10% Glycerol.
Preservative	0.02% Sodium azide
Stabilizer	10% Glycerol
Concentration	1 mg/ml
Storage instruction	For continuous use, store undiluted antibody at 2-8°C for up to a week. For long-term storage, aliquot and store at -20°C. Storage in frost free freezers is not recommended. Avoid repeated freeze/thaw cycles. Suggest spin the vial prior to opening. The antibody solution should be gently mixed before use.
Note	For laboratory research only, not for drug, diagnostic or other use.

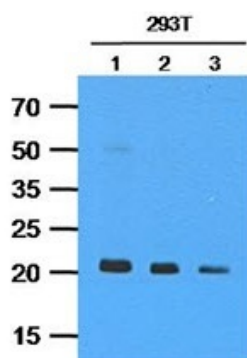
Database links	GeneID: 4893 Human Swiss-port # P01111 Human
Gene Symbol	NRAS
Gene Full Name	neuroblastoma RAS viral (v-ras) oncogene homolog
Background	This is an N-ras oncogene encoding a membrane protein that shuttles between the Golgi apparatus and the plasma membrane. This shuttling is regulated through palmitoylation and depalmitoylation by the ZDHHC9-GOLGA7 complex. The encoded protein, which has intrinsic GTPase activity, is activated by a guanine nucleotide-exchange factor and inactivated by a GTPase activating protein. Mutations in this gene have been associated with somatic rectal cancer, follicular thyroid cancer, autoimmune lymphoproliferative syndrome, Noonan syndrome, and juvenile myelomonocytic leukemia. [provided by RefSeq, Jun 2011]
Function	Ras proteins bind GDP/GTP and possess intrinsic GTPase activity. [UniProt]
Calculated Mw	21 kDa
PTM	Palmitoylated by the ZDHHC9-GOLGA7 complex. A continuous cycle of de- and re-palmitoylation regulates rapid exchange between plasma membrane and Golgi. Acetylation at Lys-104 prevents interaction with guanine nucleotide exchange factors (GEFs).

Images



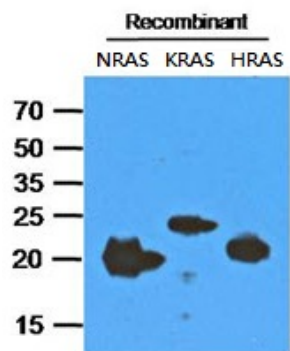
ARG57108 anti-Ras (pan) antibody [2G9] FACS image

Flow Cytometry: HeLa cell line stained with ARG57108 anti-Ras (pan) antibody [2G9] at 2-5 μ g for 1×10^6 cells (red line). Secondary antibody: Goat anti-Mouse IgG Alexa fluor 488 conjugate. Isotype control antibody: Mouse IgG (black line).



ARG57108 anti-Ras (pan) antibody [2G9] WB image

Western blot: 35 μ g of 293T cell lysates stained with ARG57108 anti-Ras (pan) antibody [2G9] at 1) 1:500, 2) 1:1000, and 3) 1:5000.



ARG57108 anti-Ras (pan) antibody [2G9] WB image

Western blot: 200 ng of NRAS, KRAS and HRAS recombinant proteins stained with ARG57108 anti-Ras (pan) antibody [2G9].