

ARG57115 anti-GIPC antibody [1G10]

Package: 50 µl
Store at: -20°C

Summary

Product Description	Mouse Monoclonal antibody [1G10] recognizes GIPC
Tested Reactivity	Hu
Tested Application	FACS, WB
Host	Mouse
Clonality	Monoclonal
Clone	1G10
Isotype	IgG1, kappa
Target Name	GIPC
Species	Human
Immunogen	Recombinant fragment around aa. 1-315 of Human GIPC
Conjugation	Un-conjugated
Alternate Names	PDZ domain-containing protein GIPC2; SEMCAP2; SEMCAP-2

Application Instructions

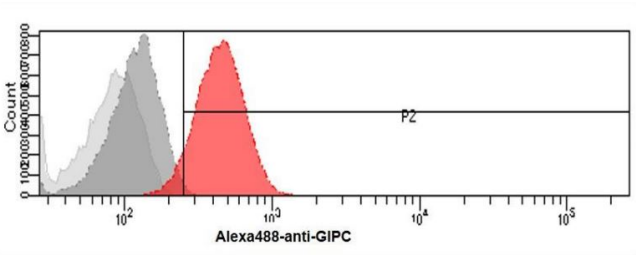
Application table	Application	Dilution
	FACS	Assay-dependent
	WB	1:1000
Application Note	* The dilutions indicate recommended starting dilutions and the optimal dilutions or concentrations should be determined by the scientist.	

Properties

Form	Liquid
Purification	Purification with Protein G.
Buffer	PBS (pH 7.4), 0.02% Sodium azide and 10% Glycerol.
Preservative	0.02% Sodium azide
Stabilizer	10% Glycerol
Concentration	1 mg/ml
Storage instruction	For continuous use, store undiluted antibody at 2-8°C for up to a week. For long-term storage, aliquot and store at -20°C. Storage in frost free freezers is not recommended. Avoid repeated freeze/thaw cycles. Suggest spin the vial prior to opening. The antibody solution should be gently mixed before use.
Note	For laboratory research only, not for drug, diagnostic or other use.

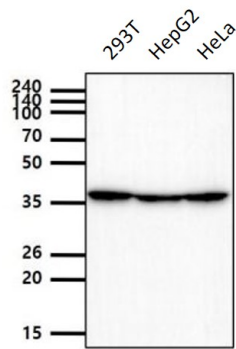
Database links	GeneID: 54810 Human Swiss-port # Q8TF65 Human
Gene Symbol	GIPC2
Gene Full Name	GIPC PDZ domain containing family, member 2
Calculated Mw	34 kDa

Images



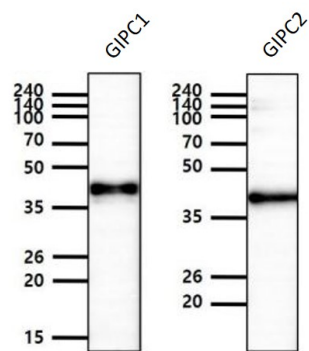
ARG57115 anti-GIPC antibody [1G10] FACS image

Flow Cytometry: HeLa cells stained with ARG57115 anti-GIPC antibody [1G10] at 2-5 µg / 10⁶ cells (red). Secondary antibody: Goat anti-Mouse IgG Alexa fluor 488 conjugate. Mouse monoclonal IgG was used as the isotype control (dark gray), cells without incubation with primary and secondary antibody was used as the negative control (light gray).



ARG57115 anti-GIPC antibody [1G10] WB image

Western blot: 40 µg of 293T, HepG2 and HeLa cell lysates stained with ARG57115 anti-GIPC antibody [1G10] at 1:1000 dilution.



ARG57115 anti-GIPC antibody [1G10] WB image

Western blot: 50 ng of GIPC1 and GIPC2 recombinant protein stained with ARG57115 anti-GIPC antibody [1G10] at 1:1000 dilution.