

ARG57116 anti-LSM2 antibody [2B2]

Package: 50 µl
Store at: -20°C

Summary

Product Description	Mouse Monoclonal antibody [2B2] recognizes LSM2
Tested Reactivity	Hu
Tested Application	WB
Host	Mouse
Clonality	Monoclonal
Clone	2B2
Isotype	IgG2a, kappa
Target Name	LSM2
Species	Human
Immunogen	Recombinant fragment around aa. 1-95 of Human LSM2
Conjugation	Un-conjugated
Alternate Names	U6 snRNA-associated Sm-like protein LSM2; YBL026W; G7B; snRNP core Sm-like protein Sm-x5; snRNP; Small nuclear ribonuclear protein D homolog; Protein G7b; C6orf28

Application Instructions

Application table	Application	Dilution
	WB	1:1000 - 1:3000
Application Note	* The dilutions indicate recommended starting dilutions and the optimal dilutions or concentrations should be determined by the scientist.	

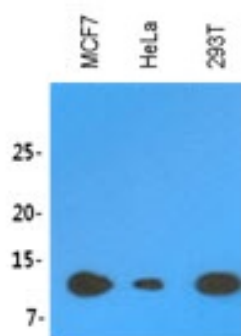
Properties

Form	Liquid
Purification	Purification with Protein G.
Buffer	PBS (pH 7.4), 0.02% Sodium azide and 10% Glycerol.
Preservative	0.02% Sodium azide
Stabilizer	10% Glycerol
Concentration	1 mg/ml
Storage instruction	For continuous use, store undiluted antibody at 2-8°C for up to a week. For long-term storage, aliquot and store at -20°C. Storage in frost free freezers is not recommended. Avoid repeated freeze/thaw cycles. Suggest spin the vial prior to opening. The antibody solution should be gently mixed before use.
Note	For laboratory research only, not for drug, diagnostic or other use.

Bioinformation

Database links	GeneID: 57819 Human Swiss-port # Q9Y333 Human
Gene Symbol	LSM2
Gene Full Name	LSM2 homolog, U6 small nuclear RNA and mRNA degradation associated
Background	This gene encodes a member of the LSm family of RNA-binding proteins. LSm proteins form stable heteromers that bind specifically to the 3'-terminal oligo(U) tract of U6 snRNA and may play a role in pre-mRNA splicing by mediating U4/U6 snRNP formation. Pseudogenes of this gene are located on the short arm of chromosomes 6 and 19. [provided by RefSeq, Nov 2011]
Function	Binds specifically to the 3'-terminal U-tract of U6 snRNA. May be involved in pre-mRNA splicing. [UniProt]
Calculated Mw	11 kDa

Images



ARG57116 anti-LSM2 antibody [2B2] WB image

Western blot: 30 µg of MCF7, HeLa, and 293T cell lysates stained with ARG57116 anti-LSM2 antibody [2B2] at 1:1000.