

ARG57117 anti-GCLM antibody [2D12]

Package: 50 µl
Store at: -20°C

Summary

Product Description	Mouse Monoclonal antibody [2D12] recognizes GCLM
Tested Reactivity	Hu
Tested Application	ICC/IF, WB
Host	Mouse
Clonality	Monoclonal
Clone	2D12
Isotype	IgG1, kappa
Target Name	GCLM
Species	Human
Immunogen	Recombinant fragment around aa. 1-274 of Human GCLM
Conjugation	Un-conjugated
Alternate Names	GCS light chain; Gamma-ECS regulatory subunit; Glutamate--cysteine ligase regulatory subunit; GLCLR; Gamma-glutamylcysteine synthetase regulatory subunit; Glutamate--cysteine ligase modifier subunit

Application Instructions

Application table	Application	Dilution
	ICC/IF	Assay-dependent
	WB	1:3000
Application Note	* The dilutions indicate recommended starting dilutions and the optimal dilutions or concentrations should be determined by the scientist.	

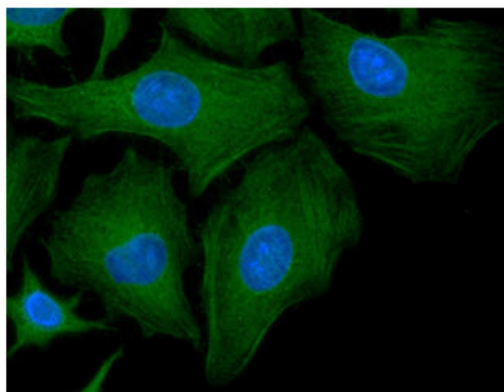
Properties

Form	Liquid
Purification	Purification with Protein G.
Buffer	PBS (pH 7.4), 0.02% Sodium azide and 10% Glycerol.
Preservative	0.02% Sodium azide
Stabilizer	10% Glycerol
Concentration	1 mg/ml
Storage instruction	For continuous use, store undiluted antibody at 2-8°C for up to a week. For long-term storage, aliquot and store at -20°C. Storage in frost free freezers is not recommended. Avoid repeated freeze/thaw cycles. Suggest spin the vial prior to opening. The antibody solution should be gently mixed before use.
Note	For laboratory research only, not for drug, diagnostic or other use.

Bioinformation

Database links	GeneID: 2730 Human Swiss-port # P48507 Human
Gene Symbol	GCLM
Gene Full Name	glutamate-cysteine ligase, modifier subunit
Background	Glutamate-cysteine ligase, also known as gamma-glutamylcysteine synthetase, is the first rate limiting enzyme of glutathione synthesis. The enzyme consists of two subunits, a heavy catalytic subunit and a light regulatory subunit. Gamma glutamylcysteine synthetase deficiency has been implicated in some forms of hemolytic anemia. Alternative splicing results in multiple transcript variants encoding different isoforms. [provided by RefSeq, Apr 2015]
Calculated Mw	31 kDa

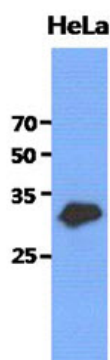
Images



ARG57117 anti-GCLM antibody [2D12] ICC/IF image

Immunofluorescence: HeLa cells line stained with ARG57117 anti-GCLM antibody [2D12] at 1:100 (Green).

DAPI (Blue) for nucleus staining.



ARG57117 anti-GCLM antibody [2D12] WB image

Western blot: 40 µg of HeLa cell lysate stained with ARG57117 anti-GCLM antibody [2D12] at 1:3000.