

## ARG57135 anti-COTL1 antibody [1D6]

Package: 50 µl  
Store at: -20°C

### Summary

Product Description	Mouse Monoclonal antibody [1D6] recognizes COTL1
Tested Reactivity	Hu
Tested Application	FACS, WB
Host	Mouse
Clonality	Monoclonal
Clone	1D6
Isotype	IgG2b, kappa
Target Name	COTL1
Species	Human
Immunogen	Recombinant fragment around aa. 1-142 of Human COTL1
Conjugation	Un-conjugated
Alternate Names	Coactosin-like protein; CLP

### Application Instructions

Application table	Application	Dilution
	FACS	Assay-dependent
	WB	1:250 - 1:1000
Application Note	* The dilutions indicate recommended starting dilutions and the optimal dilutions or concentrations should be determined by the scientist.	

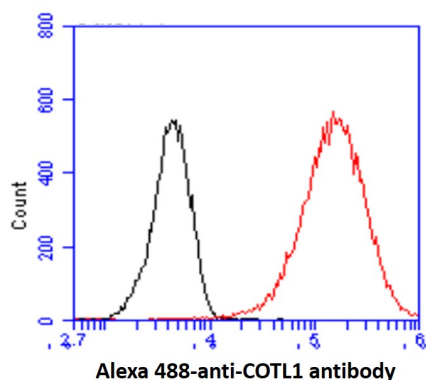
### Properties

Form	Liquid
Purification	Purification with Protein A.
Buffer	PBS (pH 7.4), 0.02% Sodium azide and 10% Glycerol.
Preservative	0.02% Sodium azide
Stabilizer	10% Glycerol
Concentration	1 mg/ml
Storage instruction	For continuous use, store undiluted antibody at 2-8°C for up to a week. For long-term storage, aliquot and store at -20°C. Storage in frost free freezers is not recommended. Avoid repeated freeze/thaw cycles. Suggest spin the vial prior to opening. The antibody solution should be gently mixed before use.
Note	For laboratory research only, not for drug, diagnostic or other use.

## Bioinformation

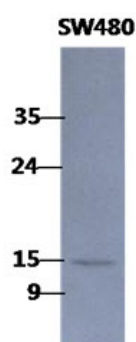
Database links	<a href="#">GeneID: 23406 Human</a> <a href="#">Swiss-port # Q14019 Human</a>
Gene Symbol	COTL1
Gene Full Name	coactosin-like F-actin binding protein 1
Background	This gene encodes one of the numerous actin-binding proteins which regulate the actin cytoskeleton. This protein binds F-actin, and also interacts with 5-lipoxygenase, which is the first committed enzyme in leukotriene biosynthesis. Although this gene has been reported to map to chromosome 17 in the Smith-Magenis syndrome region, the best alignments for this gene are to chromosome 16. The Smith-Magenis syndrome region is the site of two related pseudogenes. [provided by RefSeq, Jul 2008]
Function	Binds to F-actin in a calcium-independent manner. Has no direct effect on actin depolymerization. Acts as a chaperone for ALOX5 (SLO), influencing both its stability and activity in leukotrienes synthesis. [UniProt]
Calculated Mw	16 kDa

## Images



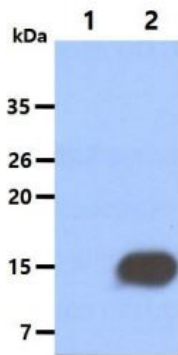
ARG57135 anti-COTL1 antibody [1D6] FACS image

Flow Cytometry: HeLa cell line stained with ARG57135 anti-COTL1 antibody [1D6] at 2-5  $\mu\text{g}$  for  $1 \times 10^6$  cells (red line). Secondary antibody: Goat anti-Mouse IgG Alexa fluor 488 conjugate. Isotype control antibody: Mouse IgG (black line).



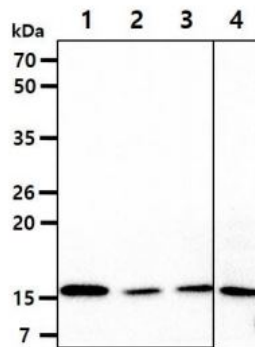
ARG57135 anti-COTL1 antibody [1D6] WB image

Western blot: 40  $\mu\text{g}$  of SW480 cell lysate stained with ARG57135 anti-COTL1 antibody [1D6] at 1:1000.



ARG57135 anti-COTL1 antibody [1D6] WB image

Western blot: 20  $\mu$ g of 1) 293T, and 2) COTL1 transfected 293T cell lysate stained with ARG57135 anti-COTL1 antibody [1D6] at 1:2000.



ARG57135 anti-COTL1 antibody [1D6] WB image

Western blot: 40  $\mu$ g of 1) PC3, 2) A549, 3) U87-MG, and 4) HeLa cell lysates stained with ARG57135 anti-COTL1 antibody [1D6] at 1:500.