

## ARG57144 anti-Fascin antibody [13D2]

Package: 50 µl  
Store at: -20°C

### Summary

Product Description	Mouse Monoclonal antibody [13D2] recognizes Fascin
Tested Reactivity	Hu
Tested Application	FACS, WB
Host	Mouse
Clonality	Monoclonal
Clone	13D2
Isotype	IgG2b, kappa
Target Name	Fascin
Species	Human
Immunogen	Recombinant fragment around aa. 1-493 of Human Fascin
Conjugation	Un-conjugated
Alternate Names	Singed-like protein; SNL; HSN; 55 kDa actin-bundling protein; FAN1; Fascin; p55

### Application Instructions

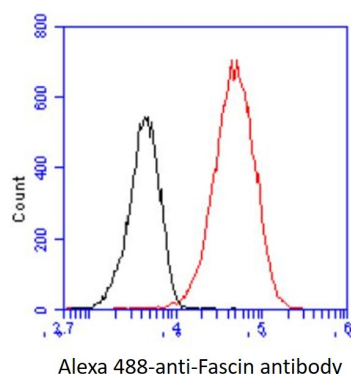
Application table	Application	Dilution
	FACS	Assay-dependent
	WB	Assay-dependent
Application Note	* The dilutions indicate recommended starting dilutions and the optimal dilutions or concentrations should be determined by the scientist.	

### Properties

Form	Liquid
Purification	Purification with Protein A.
Buffer	PBS (pH 7.4), 0.02% Sodium azide and 10% Glycerol.
Preservative	0.02% Sodium azide
Stabilizer	10% Glycerol
Concentration	1 mg/ml
Storage instruction	For continuous use, store undiluted antibody at 2-8°C for up to a week. For long-term storage, aliquot and store at -20°C. Storage in frost free freezers is not recommended. Avoid repeated freeze/thaw cycles. Suggest spin the vial prior to opening. The antibody solution should be gently mixed before use.
Note	For laboratory research only, not for drug, diagnostic or other use.

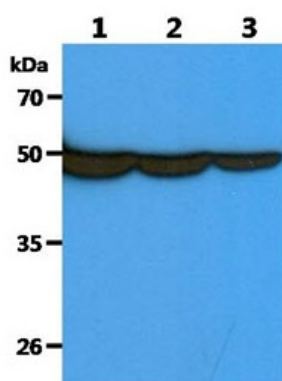
Database links	<a href="#">GeneID: 6624 Human</a> <a href="#">Swiss-port # Q16658 Human</a>
Gene Symbol	FSCN1
Gene Full Name	fascin actin-bundling protein 1
Background	<p>This gene encodes a member of the fascin family of actin-binding proteins. Fascin proteins organize F-actin into parallel bundles, and are required for the formation of actin-based cellular protrusions. The encoded protein plays a critical role in cell migration, motility, adhesion and cellular interactions. Expression of this gene is known to be regulated by several microRNAs, and overexpression of this gene may play a role in the metastasis of multiple types of cancer by increasing cell motility. Expression of this gene is also a marker for Reed-Sternberg cells in Hodgkin's lymphoma. A pseudogene of this gene is located on the long arm of chromosome 15. [provided by RefSeq, Sep 2011]</p>
Function	<p>Organizes filamentous actin into bundles with a minimum of 4.1:1 actin/fascin ratio. Plays a role in the organization of actin filament bundles and the formation of microspikes, membrane ruffles, and stress fibers. Important for the formation of a diverse set of cell protrusions, such as filopodia, and for cell motility and migration. [UniProt]</p>
Calculated Mw	55 kDa
PTM	Phosphorylation on Ser-39 inhibits the actin-binding ability of fascin.

## Images



ARG57144 anti-Fascin antibody [13D2] FACS image

Flow Cytometry: HeLa cell line stained with ARG57144 anti-Fascin antibody [13D2] at 2-5  $\mu$ g for  $1 \times 10^6$  cells (red line). Secondary antibody: Goat anti-Mouse IgG Alexa fluor 488 conjugate. Isotype control antibody: Mouse IgG (black line).



ARG57144 anti-Fascin antibody [13D2] WB image

Western blot: 40  $\mu$ g of 1) HeLa, 2) HepG2, and 3) THP-1 cell lysates stained with ARG57144 anti-Fascin antibody [13D2] at 1:1000.