

## ARG57145 anti-Lactate Dehydrogenase B antibody [14D7]

Package: 50 µl  
Store at: -20°C

### Summary

Product Description	Mouse Monoclonal antibody [14D7] recognizes Lactate Dehydrogenase B
Tested Reactivity	Hu
Tested Application	WB
Host	Mouse
Clonality	Monoclonal
Clone	14D7
Isotype	IgG2a, kappa
Target Name	Lactate Dehydrogenase B
Species	Human
Immunogen	Recombinant fragment around aa. 1-334 of Human Lactate Dehydrogenase B
Conjugation	Un-conjugated
Alternate Names	Renal carcinoma antigen NY-REN-46; LDH heart subunit; TRG-5; LDHBD; LDH-H; EC 1.1.1.27; LDH-B; HEL-S-281; L-lactate dehydrogenase B chain

### Application Instructions

Application table	Application	Dilution
	WB	1:500 - 1:1000

**Application Note** \* The dilutions indicate recommended starting dilutions and the optimal dilutions or concentrations should be determined by the scientist.

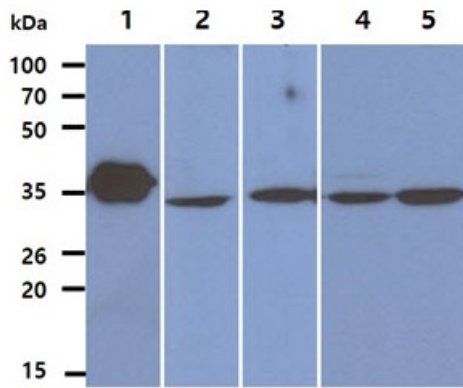
### Properties

Form	Liquid
Purification	Purification with Protein A.
Buffer	PBS (pH 7.4), 0.02% Sodium azide and 10% Glycerol.
Preservative	0.02% Sodium azide
Stabilizer	10% Glycerol
Concentration	1 mg/ml
Storage instruction	For continuous use, store undiluted antibody at 2-8°C for up to a week. For long-term storage, aliquot and store at -20°C. Storage in frost free freezers is not recommended. Avoid repeated freeze/thaw cycles. Suggest spin the vial prior to opening. The antibody solution should be gently mixed before use.
Note	For laboratory research only, not for drug, diagnostic or other use.

## Bioinformation

Database links	<a href="#">GeneID: 3945 Human</a> <a href="#">Swiss-port # P07195 Human</a>
Gene Symbol	LDHB
Gene Full Name	lactate dehydrogenase B
Background	This gene encodes an enzyme which catalyzes the reversible conversion of lactate and pyruvate, and NAD and NADH, in the glycolytic pathway. Mutations in this gene are associated with lactate dehydrogenase B deficiency. Pseudogenes have been identified on the X chromosome and on chromosome. Multiple alternatively spliced variants, encoding the same protein, have been identified. [provided by RefSeq, Mar 2010]
Research Area	Cancer antibody; Metabolism antibody; Signaling Transduction antibody; Lactate dehydrogenase antibody; Warburg Effect signaling pathway antibody
Calculated Mw	37 kDa

## Images



ARG57145 anti-Lactate Dehydrogenase B antibody [14D7] WB image

Western blot: 50 ng of 1) Recombinant LDHB protein, 40 µg of 2) A549, 3) 293T, 4) K562, and 5) Jurkat cell lysates stained with ARG57145 anti-Lactate Dehydrogenase B antibody [14D7] at 1:1000.