

ARG57168 anti-CKB / Brain Creatine Kinase antibody [8E4]

Package: 50 µl
Store at: -20°C

Summary

Product Description	Mouse Monoclonal antibody [8E4] recognizes CKB / Brain Creatine Kinase
Tested Reactivity	Hu
Tested Application	FACS, WB
Host	Mouse
Clonality	Monoclonal
Clone	8E4
Isotype	IgG2a, kappa
Target Name	CKB / Brain Creatine Kinase
Species	Human
Immunogen	Recombinant fragment around aa. 1-381 of Human CKB
Conjugation	Un-conjugated
Alternate Names	Creatine kinase B-type; EC 2.7.3.2; BCK; B-CK; CKBB; Creatine kinase B chain; HEL-S-29; HEL-211

Application Instructions

Application table	Application	Dilution
	FACS	Assay-dependent
	WB	Assay-dependent
Application Note	* The dilutions indicate recommended starting dilutions and the optimal dilutions or concentrations should be determined by the scientist.	

Properties

Form	Liquid
Purification	Purification with Protein A.
Buffer	PBS (pH 7.4), 0.02% Sodium azide and 10% Glycerol.
Preservative	0.02% Sodium azide
Stabilizer	10% Glycerol
Concentration	1 mg/ml
Storage instruction	For continuous use, store undiluted antibody at 2-8°C for up to a week. For long-term storage, aliquot and store at -20°C. Storage in frost free freezers is not recommended. Avoid repeated freeze/thaw cycles. Suggest spin the vial prior to opening. The antibody solution should be gently mixed before use.
Note	For laboratory research only, not for drug, diagnostic or other use.

Database links [GeneID: 1152 Human](#)
[Swiss-port # P12277 Human](#)

Gene Symbol CKB

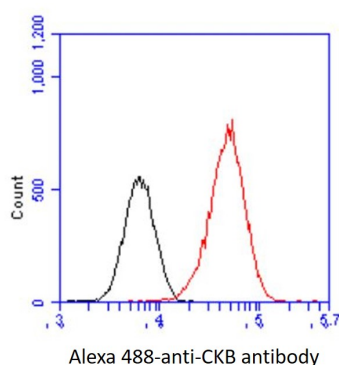
Gene Full Name creatine kinase, brain

Background The protein encoded by this gene is a cytoplasmic enzyme involved in energy homeostasis. The encoded protein reversibly catalyzes the transfer of phosphate between ATP and various phosphogens such as creatine phosphate. It acts as a homodimer in brain as well as in other tissues, and as a heterodimer with a similar muscle isozyme in heart. The encoded protein is a member of the ATP:guanido phosphotransferase protein family. A pseudogene of this gene has been characterized. [provided by RefSeq, Jul 2008]

Function Reversibly catalyzes the transfer of phosphate between ATP and various phosphogens (e.g. creatine phosphate). Creatine kinase isoenzymes play a central role in energy transduction in tissues with large, fluctuating energy demands, such as skeletal muscle, heart, brain and spermatozoa. [UniProt]

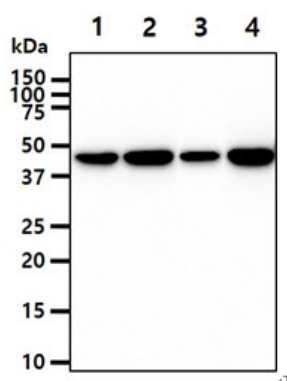
Calculated Mw 43 kDa

Images



ARG57168 anti-CKB / Brain Creatine Kinase antibody [8E4] FACS image

Flow Cytometry: HeLa cell line stained with ARG57168 anti-CKB / Brain Creatine Kinase antibody [8E4] at 2-5 μ g for 1×10^6 cells (red line). Secondary antibody: Goat anti-Mouse IgG Alexa fluor 488 conjugate. Isotype control antibody: Mouse IgG (black line).



ARG57168 anti-CKB / Brain Creatine Kinase antibody [8E4] WB image

Western blot: 40 μ g of 1) HeLa, 2) 293T, 3) K562, and 4) LnCap cell lysates stained with ARG57168 anti-CKB / Brain Creatine Kinase antibody [8E4] at 1:1000.