

ARG57299 anti-alpha Actinin antibody

Package: 100 µl
Store at: -20°C

Summary

Product Description	Rabbit Polyclonal antibody recognizes alpha Actinin
Tested Reactivity	Hu, Ms
Tested Application	IHC-P, WB
Host	Rabbit
Clonality	Polyclonal
Isotype	IgG
Target Name	alpha Actinin
Species	Human
Immunogen	Recombinant Protein of Human alpha Actinin.
Conjugation	Un-conjugated
Alternate Names	F-actin cross-linking protein; Non-muscle alpha-actinin-1; BDPLT15; Alpha-actinin cytoskeletal isoform; Alpha-actinin-1

Application Instructions

Application table	Application	Dilution
	IHC-P	1:50 - 1:200
	WB	1:500 - 1:2000
Application Note	* The dilutions indicate recommended starting dilutions and the optimal dilutions or concentrations should be determined by the scientist.	
Positive Control	HeLa	

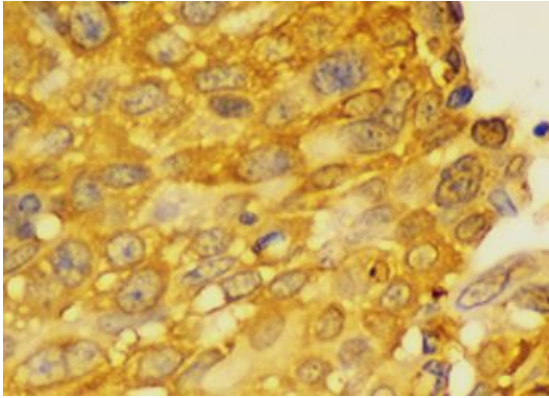
Properties

Form	Liquid
Purification	Affinity purification with immunogen.
Buffer	PBS (pH 7.3), 0.02% Sodium azide and 50% Glycerol.
Preservative	0.02% Sodium azide
Stabilizer	50% Glycerol
Storage instruction	For continuous use, store undiluted antibody at 2-8°C for up to a week. For long-term storage, aliquot and store at -20°C. Storage in frost free freezers is not recommended. Avoid repeated freeze/thaw cycles. Suggest spin the vial prior to opening. The antibody solution should be gently mixed before use.
Note	For laboratory research only, not for drug, diagnostic or other use.

Bioinformation

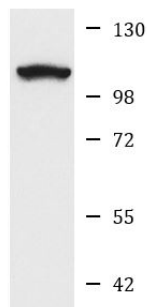
Gene Symbol	ACTN1
Gene Full Name	actinin, alpha 1
Background	Alpha actinins belong to the spectrin gene superfamily which represents a diverse group of cytoskeletal proteins, including the alpha and beta spectrins and dystrophins. Alpha actinin is an actin-binding protein with multiple roles in different cell types. In nonmuscle cells, the cytoskeletal isoform is found along microfilament bundles and adherens-type junctions, where it is involved in binding actin to the membrane. In contrast, skeletal, cardiac, and smooth muscle isoforms are localized to the Z-disc and analogous dense bodies, where they help anchor the myofibrillar actin filaments. This gene encodes a nonmuscle, cytoskeletal, alpha actinin isoform and maps to the same site as the structurally similar erythroid beta spectrin gene. Three transcript variants encoding different isoforms have been found for this gene. [provided by RefSeq, Jul 2008]
Function	F-actin cross-linking protein which is thought to anchor actin to a variety of intracellular structures. This is a bundling protein. [UniProt]
Calculated Mw	103 kDa

Images



ARG57299 anti-alpha Actinin antibody IHC-P image

Immunohistochemistry: Paraffin-embedded Human lung cancer stained with ARG57299 anti-alpha Actinin antibody at 1:100 dilution.



HeLa

ARG57299 anti-alpha Actinin antibody WB image

Western blot: HeLa cell lysate stained with ARG57299 anti-alpha Actinin antibody.