

## ARG57311 anti-CD151 antibody

Package: 100 µl  
Store at: -20°C

### Summary

Product Description	Rabbit Polyclonal antibody recognizes CD151
Tested Reactivity	Hu, Ms, Rat
Tested Application	IHC-P, WB
Host	Rabbit
Clonality	Polyclonal
Isotype	IgG
Target Name	CD151
Species	Human
Immunogen	Recombinant Protein of Human CD151.
Conjugation	Un-conjugated
Alternate Names	SFA1; Tetraspanin-24; GP27; Tspan-24; MER2; TSPAN24; PETA-3; RAPH; Membrane glycoprotein SFA-1; CD151 antigen; CD antigen CD151; Platelet-endothelial tetraspan antigen 3

### Application Instructions

Application table	Application	Dilution
	IHC-P	1:50 - 1:200
	WB	1:500 - 1:2000
Application Note	* The dilutions indicate recommended starting dilutions and the optimal dilutions or concentrations should be determined by the scientist.	
Positive Control	Mouse kidney	

### Properties

Form	Liquid
Purification	Affinity purification with immunogen.
Buffer	PBS (pH 7.3), 0.02% Sodium azide and 50% Glycerol.
Preservative	0.02% Sodium azide
Stabilizer	50% Glycerol
Storage instruction	For continuous use, store undiluted antibody at 2-8°C for up to a week. For long-term storage, aliquot and store at -20°C. Storage in frost free freezers is not recommended. Avoid repeated freeze/thaw cycles. Suggest spin the vial prior to opening. The antibody solution should be gently mixed before use.
Note	For laboratory research only, not for drug, diagnostic or other use.

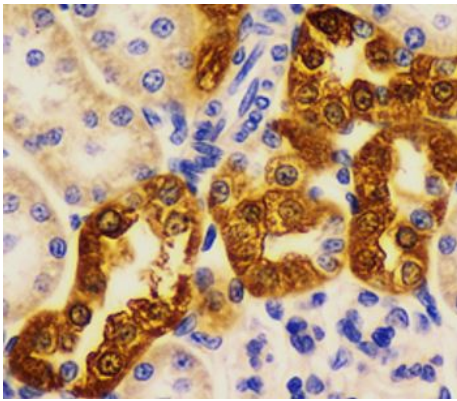
## Bioinformation

---

Gene Symbol	CD151
Gene Full Name	CD151 molecule (Raph blood group)
Background	The protein encoded by this gene is a member of the transmembrane 4 superfamily, also known as the tetraspanin family. Most of these members are cell-surface proteins that are characterized by the presence of four hydrophobic domains. The proteins mediate signal transduction events that play a role in the regulation of cell development, activation, growth and motility. This encoded protein is a cell surface glycoprotein that is known to complex with integrins and other transmembrane 4 superfamily proteins. It is involved in cellular processes including cell adhesion and may regulate integrin trafficking and/or function. This protein enhances cell motility, invasion and metastasis of cancer cells. Multiple alternatively spliced transcript variants that encode the same protein have been described for this gene. [provided by RefSeq, Jul 2008]
Function	Essential for the proper assembly of the glomerular and tubular basement membranes in kidney. [UniProt]
Calculated Mw	28 kDa

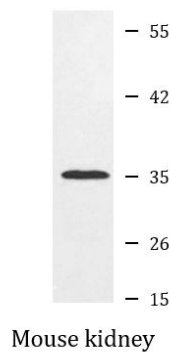
## Images

---



ARG57311 anti-CD151 antibody IHC-P image

Immunohistochemistry: Paraffin-embedded Rat kidney stained with ARG57311 anti-CD151 antibody at 1:200 dilution.



ARG57311 anti-CD151 antibody WB image

Western blot: Mouse kidney lysate stained with ARG57311 anti-CD151 antibody.