

ARG57338 anti-Collagen I alpha 2 antibody

Package: 100 µl
Store at: -20°C

Summary

Product Description	Rabbit Polyclonal antibody recognizes Collagen I alpha 2
Tested Reactivity	Hu, Ms, Rat
Tested Application	ICC/IF, IHC-P, WB
Host	Rabbit
Clonality	Polyclonal
Isotype	IgG
Target Name	Collagen I alpha 2
Species	Human
Immunogen	Recombinant Protein of Human COL1A2.
Conjugation	Un-conjugated
Alternate Names	OI4; Collagen alpha-2(I) chain; Alpha-2 type I collagen

Application Instructions

Application table	Application	Dilution
	ICC/IF	1:50 - 1:100
	IHC-P	1:50 - 1:100
	WB	1:500 - 1:1000
Application Note	* The dilutions indicate recommended starting dilutions and the optimal dilutions or concentrations should be determined by the scientist.	
Positive Control	Mouse kidney	

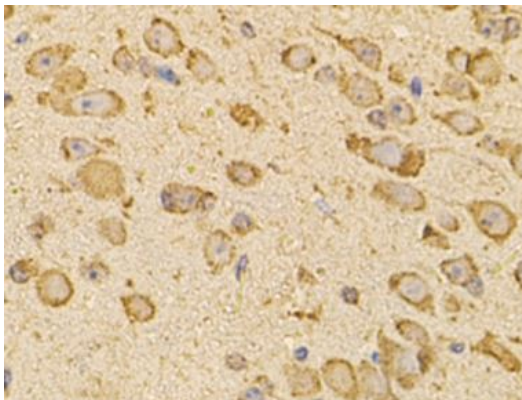
Properties

Form	Liquid
Purification	Affinity purification with immunogen.
Buffer	PBS (pH 7.3), 0.02% Sodium azide and 50% Glycerol.
Preservative	0.02% Sodium azide
Stabilizer	50% Glycerol
Storage instruction	For continuous use, store undiluted antibody at 2-8°C for up to a week. For long-term storage, aliquot and store at -20°C. Storage in frost free freezers is not recommended. Avoid repeated freeze/thaw cycles. Suggest spin the vial prior to opening. The antibody solution should be gently mixed before use.
Note	For laboratory research only, not for drug, diagnostic or other use.

Bioinformation

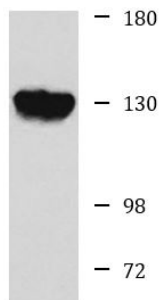
Gene Symbol	COL1A2
Gene Full Name	collagen, type I, alpha 2
Background	This gene encodes the pro-alpha2 chain of type I collagen whose triple helix comprises two alpha1 chains and one alpha2 chain. Type I is a fibril-forming collagen found in most connective tissues and is abundant in bone, cornea, dermis and tendon. Mutations in this gene are associated with osteogenesis imperfecta types I-IV, Ehlers-Danlos syndrome type VIIB, recessive Ehlers-Danlos syndrome Classical type, idiopathic osteoporosis, and atypical Marfan syndrome. Symptoms associated with mutations in this gene, however, tend to be less severe than mutations in the gene for the alpha1 chain of type I collagen (COL1A1) reflecting the different role of alpha2 chains in matrix integrity. Three transcripts, resulting from the use of alternate polyadenylation signals, have been identified for this gene. [provided by R. Dalgleish, Feb 2008]
Function	Type I collagen is a member of group I collagen (fibrillar forming collagen). [UniProt]
Highlight	Related products: Collagen I antibodies ; Collagen I ELISA Kits ; Collagen I Duos / Panels ; Anti-Rabbit IgG secondary antibodies ; Related news: New antibody panels for Myofibroblasts and CAFs
Calculated Mw	129 kDa
PTM	Prolines at the third position of the tripeptide repeating unit (G-X-Y) are hydroxylated in some or all of the chains.

Images



ARG57338 anti-Collagen I alpha 2 antibody IHC-P image

Immunohistochemistry: Paraffin-embedded Mouse brain tissue stained with ARG57338 anti-Collagen I alpha 2 antibody at 1:100 dilution.



Mouse kidney

ARG57338 anti-Collagen I alpha 2 antibody WB image

Western blot: Mouse kidney lysate stained with ARG57338 anti-Collagen I alpha 2 antibody.