

ARG57402
anti-ATL3 antibodyPackage: 100 µl
Store at: -20°C

Summary

Product Description	Rabbit Polyclonal antibody recognizes ATL3
Tested Reactivity	Hu, Ms, Rat
Tested Application	ICC/IF, WB
Host	Rabbit
Clonality	Polyclonal
Isotype	IgG
Target Name	ATL3
Species	Human
Immunogen	Recombinant Protein of Human ATL3.
Conjugation	Un-conjugated
Alternate Names	EC 3.6.5.-; Atlantin-3; HSN1F

Application Instructions

Application table	Application	Dilution
	ICC/IF	1:50 - 1:200
	WB	1:500 - 1:2000
Application Note	* The dilutions indicate recommended starting dilutions and the optimal dilutions or concentrations should be determined by the scientist.	
Positive Control	BxPC-3	

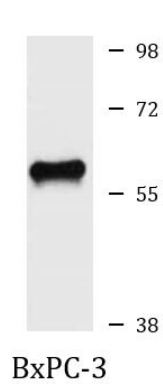
Properties

Form	Liquid
Purification	Affinity purification with immunogen.
Buffer	PBS (pH 7.3), 0.02% Sodium azide and 50% Glycerol.
Preservative	0.02% Sodium azide
Stabilizer	50% Glycerol
Storage instruction	For continuous use, store undiluted antibody at 2-8°C for up to a week. For long-term storage, aliquot and store at -20°C. Storage in frost free freezers is not recommended. Avoid repeated freeze/thaw cycles. Suggest spin the vial prior to opening. The antibody solution should be gently mixed before use.
Note	For laboratory research only, not for drug, diagnostic or other use.

Bioinformation

Gene Symbol	ATL3
Gene Full Name	atlastin GTPase 3
Background	This gene encodes a member of a family of dynamin-like, integral membrane GTPases. The encoded protein is required for the proper formation of the network of interconnected tubules of the endoplasmic reticulum. Mutations in this gene may be associated with hereditary sensory neuropathy type IF. Alternatively spliced transcript variants that encode distinct isoforms have been described. [provided by RefSeq, Feb 2014]
Function	GTPase tethering membranes through formation of trans-homooligomers and mediating homotypic fusion of endoplasmic reticulum membranes. Functions in endoplasmic reticulum tubular network biogenesis. [UniProt]
Calculated Mw	61 kDa

Images



ARG57402 anti-ATL3 antibody WB image

Western blot: BxPC-3 cell lysate stained with ARG57402 anti-ATL3 antibody.