

ARG57431 anti-ERH antibody

Package: 100 µl
Store at: -20°C

Summary

Product Description	Rabbit Polyclonal antibody recognizes ERH
Tested Reactivity	Hu
Tested Application	WB
Host	Rabbit
Clonality	Polyclonal
Isotype	IgG
Target Name	ERH
Species	Human
Immunogen	Recombinant protein of Human ERH.
Conjugation	Un-conjugated
Alternate Names	DROER; Enhancer of rudimentary homolog

Application Instructions

Application table	Application	Dilution
	WB	1:500 - 1:2000
Application Note	* The dilutions indicate recommended starting dilutions and the optimal dilutions or concentrations should be determined by the scientist.	
Positive Control	MCF7	

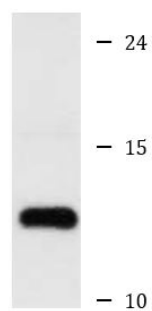
Properties

Form	Liquid
Purification	Affinity purification with immunogen.
Buffer	PBS (pH 7.3), 0.02% Sodium azide and 50% Glycerol.
Preservative	0.02% Sodium azide
Stabilizer	50% Glycerol
Storage instruction	For continuous use, store undiluted antibody at 2-8°C for up to a week. For long-term storage, aliquot and store at -20°C. Storage in frost free freezers is not recommended. Avoid repeated freeze/thaw cycles. Suggest spin the vial prior to opening. The antibody solution should be gently mixed before use.
Note	For laboratory research only, not for drug, diagnostic or other use.

Bioinformation

Gene Symbol	ERH
Gene Full Name	enhancer of rudimentary homolog (Drosophila)
Function	May have a role in the cell cycle. [UniProt]
Calculated Mw	12 kDa

Images



MCF7

ARG57431 anti-ERH antibody WB image

Western blot: MCF7 cell lysate stained with ARG57431 anti-ERH antibody.