

ARG57445 anti-S100A10 antibody

Package: 100 µl
Store at: -20°C

Summary

Product Description	Mouse Monoclonal antibody recognizes S100A10
Tested Reactivity	Hu, Ms, Rat
Tested Application	ICC/IF, IP, WB
Specificity	This antibody detects endogenous levels of S100A10 and does not cross-react with other S100 family proteins.
Host	Mouse
Clonality	Monoclonal
Isotype	IgG2a
Target Name	S100A10
Species	Human
Immunogen	Purified recombinant Human S100A10 protein fragments expressed in E. coli.
Conjugation	Un-conjugated
Alternate Names	CLP11; ANX2LG; ANX2L; Calpactin-1 light chain; Ca[1]; 42C; Calpactin I light chain; CAL1L; GP11; p10; P11; p11; S100 calcium-binding protein A10; Protein S100-A10; Cellular ligand of annexin II; p10 protein

Application Instructions

Application table	Application	Dilution
	ICC/IF	1:200
	IP	1:100
	WB	1:1000
Application Note	* The dilutions indicate recommended starting dilutions and the optimal dilutions or concentrations should be determined by the scientist.	

Properties

Form	Liquid
Purification	Affinity purified.
Buffer	PBS (pH 7.4), 0.03% Proclin300 and 50% Glycerol.
Preservative	0.03% Proclin300
Stabilizer	50% Glycerol
Concentration	4.4 mg/ml
Storage instruction	For continuous use, store undiluted antibody at 2-8°C for up to a week. For long-term storage, aliquot and store at -20°C. Storage in frost free freezers is not recommended. Avoid repeated freeze/thaw cycles. Suggest spin the vial prior to opening. The antibody solution should be gently mixed before use.

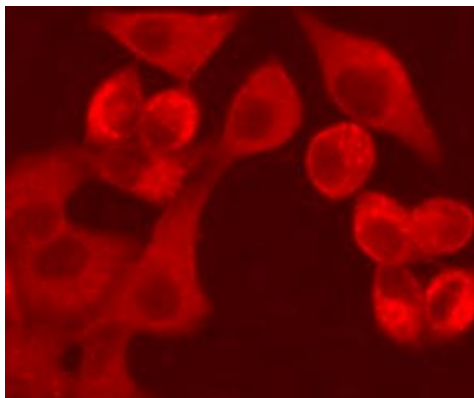
Note

For laboratory research only, not for drug, diagnostic or other use.

Bioinformation

Gene Symbol	S100A10
Gene Full Name	S100 calcium binding protein A10
Background	The protein encoded by this gene is a member of the S100 family of proteins containing 2 EF-hand calcium-binding motifs. S100 proteins are localized in the cytoplasm and/or nucleus of a wide range of cells, and involved in the regulation of a number of cellular processes such as cell cycle progression and differentiation. S100 genes include at least 13 members which are located as a cluster on chromosome 1q21. This protein may function in exocytosis and endocytosis. [provided by RefSeq, Jul 2008]
Function	Because S100A10 induces the dimerization of ANXA2/p36, it may function as a regulator of protein phosphorylation in that the ANXA2 monomer is the preferred target (in vitro) of tyrosine-specific kinase. [UniProt]
Calculated Mw	11 kDa
Cellular Localization	extracellular exosome; extrinsic component of plasma membrane; membrane raft

Images



ARG57445 anti-S100A10 antibody ICC/IF image

Immunofluorescence: HeLa cells fixed with 4% Paraformaldehyde and stained with ARG57445 anti-S100A10 antibody at 1:200 dilution.



ARG57445 anti-S100A10 antibody WB image

Western blot: C6 cell lysate stained with ARG57445 anti-S100A10 antibody at 1:1000 dilution.

ARG57445 anti-S100A10 antibody IP image

Immunoprecipitation: HeLa cell lysates were immunoprecipitated and stained with ARG57445 anti-S100A10 antibody.

