

## ARG57493 anti-KCTD15 antibody [2B11]

Package: 50 µl  
Store at: -20°C

### Summary

Product Description	Mouse Monoclonal antibody [2B11] recognizes KCTD15
Tested Reactivity	Hu, Ms
Tested Application	FACS, WB
Host	Mouse
Clonality	Monoclonal
Clone	2B11
Isotype	IgG2b, kappa
Target Name	KCTD15
Species	Human
Immunogen	Recombinant Human KCTD15 (aa. 1-159) purified from E. coli.
Conjugation	Un-conjugated
Alternate Names	BTB/POZ domain-containing protein KCTD15; Potassium channel tetramerization domain-containing protein 15

### Application Instructions

Application table	Application	Dilution
	FACS	2 - 5 µg/10 <sup>6</sup> cells
	WB	1:1000
Application Note	* The dilutions indicate recommended starting dilutions and the optimal dilutions or concentrations should be determined by the scientist.	

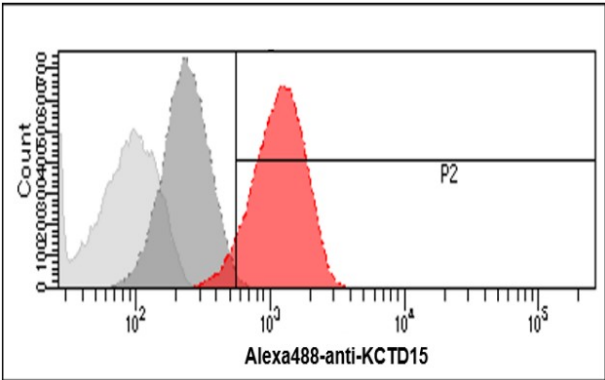
### Properties

Form	Liquid
Purification	Purification with Protein G.
Buffer	PBS (pH 7.4), 0.02% Sodium azide and 10% Glycerol.
Preservative	0.02% Sodium azide
Stabilizer	10% Glycerol
Concentration	1 mg/ml
Storage instruction	For continuous use, store undiluted antibody at 2-8°C for up to a week. For long-term storage, aliquot and store at -20°C. Storage in frost free freezers is not recommended. Avoid repeated freeze/thaw cycles. Suggest spin the vial prior to opening. The antibody solution should be gently mixed before use.
Note	For laboratory research only, not for drug, diagnostic or other use.

Bioinformation

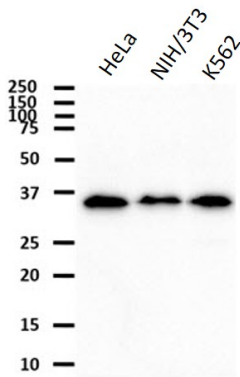
Gene Symbol	KCTD15
Gene Full Name	potassium channel tetramerization domain containing 15
Function	During embryonic development, interferes with neural crest formation (By similarity). Inhibits AP2 transcriptional activity by interaction with its activation domain. [UniProt]
Calculated Mw	32 kDa

Images



ARG57493 anti-KCTD15 antibody [2B11] FACS image

Flow Cytometry: HeLa cells stained with ARG57493 anti-KCTD15 antibody [2B11] at 2 - 5  $\mu\text{g}/10^6$  cells (red). Goat anti-Mouse IgG (Alexa fluor 488) was used as the secondary antibody. Mouse monoclonal IgG was used as the isotype control (dark gray), cells without incubation with primary and secondary antibody was used as the negative control (light gray).



ARG57493 anti-KCTD15 antibody [2B11] WB image

Western blot: 40  $\mu\text{g}$  of HeLa, NIH/3T3 and K562 cell lysates stained with ARG57493 anti-KCTD15 antibody [2B11] at 1:1000 dilution.