

ARG57497 anti-SSU72 antibody [45E2]

Package: 50 µl
Store at: -20°C

Summary

Product Description	Mouse Monoclonal antibody [45E2] recognizes SSU72
Tested Reactivity	Hu
Tested Application	WB
Host	Mouse
Clonality	Monoclonal
Clone	45E2
Isotype	IgG1, kappa
Target Name	SSU72
Species	Human
Immunogen	Recombinant Human SSU72 (aa. 1-194) purified from E. coli.
Conjugation	Un-conjugated
Alternate Names	CTD phosphatase SSU72; HSPC182; RNA polymerase II subunit A C-terminal domain phosphatase SSU72; PNAS-120; EC 3.1.3.16

Application Instructions

Application table	Application	Dilution
	WB	1:1000
Application Note	* The dilutions indicate recommended starting dilutions and the optimal dilutions or concentrations should be determined by the scientist.	

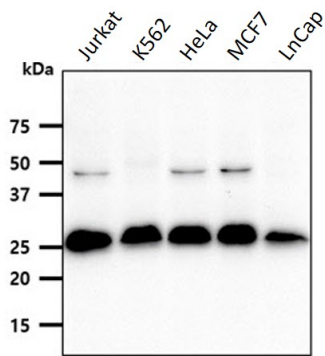
Properties

Form	Liquid
Purification	Purification with Protein A.
Buffer	PBS (pH 7.4), 0.02% Sodium azide and 10% Glycerol.
Preservative	0.02% Sodium azide
Stabilizer	10% Glycerol
Concentration	1 mg/ml
Storage instruction	For continuous use, store undiluted antibody at 2-8°C for up to a week. For long-term storage, aliquot and store at -20°C. Storage in frost free freezers is not recommended. Avoid repeated freeze/thaw cycles. Suggest spin the vial prior to opening. The antibody solution should be gently mixed before use.
Note	For laboratory research only, not for drug, diagnostic or other use.

Bioinformation

Gene Symbol	SSU72
Gene Full Name	SSU72 homolog, RNA polymerase II CTD phosphatase
Function	Protein phosphatase that catalyzes the dephosphorylation of the C-terminal domain of RNA polymerase II. Plays a role in RNA processing and termination. Plays a role in pre-mRNA polyadenylation via its interaction with SYMPK. [UniProt]
Calculated Mw	23 kDa

Images



ARG57497 anti-SSU72 antibody [45E2] WB image

Western blot: 40 µg of Jurkat, K562, HeLa, MCF7 and LnCap cell lysates stained with ARG57497 anti-SSU72 antibody [45E2] at 1:1000 dilution.