

ARG57510 anti-Vinculin antibody

Package: 50 µg
Store at: -20°C

Summary

Product Description	Rabbit Polyclonal antibody recognizes Vinculin
Tested Reactivity	Hu, Ms, Rat
Tested Application	ICC/IF, WB
Specificity	This antibody is Human, Mouse and Rat reactive. At least three isoforms of Vinculin are known to exist.
Host	Rabbit
Clonality	Polyclonal
Isotype	IgG
Target Name	Vinculin
Species	Human
Immunogen	Synthetic peptide (23 aa) within aa. 820-870 of Human Vinculin.
Conjugation	Un-conjugated
Alternate Names	HEL114; Metavinculin; CMH15; Vinculin; CMD1W; MV; MVCL

Application Instructions

Application table	Application	Dilution
	ICC/IF	5 - 20 µg/ml
	WB	0.5 - 1 µg/ml
Application Note	* The dilutions indicate recommended starting dilutions and the optimal dilutions or concentrations should be determined by the scientist.	
Positive Control	A431 Cell Lysate	

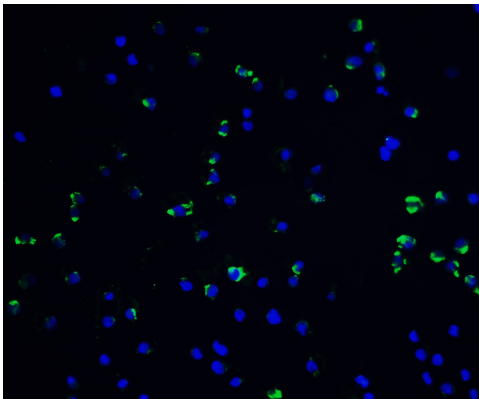
Properties

Form	Liquid
Purification	Affinity purification with immunogen.
Buffer	PBS and 0.02% Sodium azide
Preservative	0.02% Sodium azide
Concentration	1 mg/ml
Storage instruction	For continuous use, store undiluted antibody at 2-8°C for up to a week. For long-term storage, aliquot and store at -20°C or below. Storage in frost free freezers is not recommended. Avoid repeated freeze/thaw cycles. Suggest spin the vial prior to opening. The antibody solution should be gently mixed before use.
Note	For laboratory research only, not for drug, diagnostic or other use.

Bioinformation

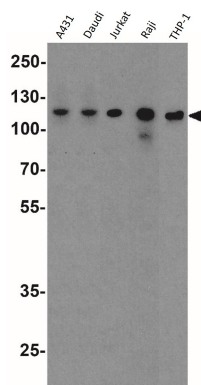
Gene Symbol	VCL
Gene Full Name	vinculin
Background	Vinculin is a cytoskeletal protein associated with cell-cell and cell-matrix junctions, where it is thought to function as one of several interacting proteins involved in anchoring F-actin to the membrane. Defects in VCL are the cause of cardiomyopathy dilated type 1W. Dilated cardiomyopathy is a disorder characterized by ventricular dilation and impaired systolic function, resulting in congestive heart failure and arrhythmia. Multiple alternatively spliced transcript variants have been found for this gene, but the biological validity of some variants has not been determined. [provided by RefSeq, Jul 2008]
Function	Actin filament (F-actin)-binding protein involved in cell-matrix adhesion and cell-cell adhesion. Regulates cell-surface E-cadherin expression and potentiates mechanosensing by the E-cadherin complex. May also play important roles in cell morphology and locomotion. [UniProt]
Research Area	Cell Biology and Cellular Response antibody; Controls and Markers antibody; Signaling Transduction antibody; Loading Control antibody; Loading Control antibody for cytoplasmic fraction; High MW loading control antibody
Calculated Mw	124 kDa
PTM	Phosphorylated; on serines, threonines and tyrosines. Phosphorylation on Tyr-1133 in activated platelets affects head-tail interactions and cell spreading but has no effect on actin binding nor on localization to focal adhesion plaques (By similarity). Acetylated; mainly by myristic acid but also by a small amount of palmitic acid.

Images



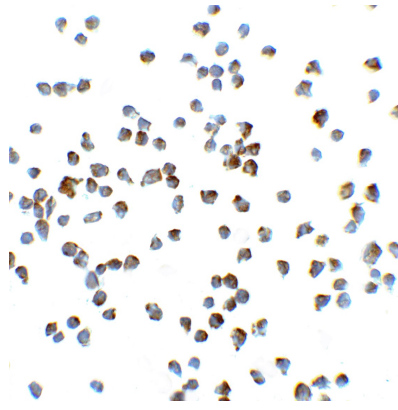
ARG57510 anti-Vinculin antibody ICC/IF image

Immunofluorescence: Jurkat cells stained with ARG57510 anti-Vinculin antibody at 20 µg/ml dilution.



ARG57510 anti-Vinculin antibody WB image

Western blot: A431, Daudi, Jurkat, Raji, and THP-1 cell lysates stained with ARG57510 anti-Vinculin antibody at 1 µg/ml dilution.



ARG57510 anti-Vinculin antibody ICC/IF image

Immunocytochemistry: Jurkat cells stained with ARG57510 anti-Vinculin antibody at 5 $\mu\text{g}/\text{ml}$ dilution.