

ARG57523 anti-TSPAN7 antibody

Package: 100 µl
Store at: -20°C

Summary

Product Description	Rabbit Polyclonal antibody recognizes TSPAN7
Tested Reactivity	Hu
Predict Reactivity	Ms
Tested Application	FACS, WB
Host	Rabbit
Clonality	Polyclonal
Isotype	IgG
Target Name	TSPAN7
Species	Human
Immunogen	KLH-conjugated synthetic peptide corresponding to aa. 98-124 (Center) of Human TSPAN7.
Conjugation	Un-conjugated
Alternate Names	A15; CCG-B7; Tetraspanin-7; Transmembrane 4 superfamily member 2; CD antigen CD231; TM4SF2; Tspan-7; Cell surface glycoprotein A15; TM4SF2b; CD231; DXS1692E; Membrane component chromosome X surface marker 1; T-cell acute lymphoblastic leukemia-associated antigen 1; TALLA-1; MRX58; MXS1

Application Instructions

Application table	Application	Dilution
	FACS	1:10 - 1:50
	WB	1:1000
Application Note	* The dilutions indicate recommended starting dilutions and the optimal dilutions or concentrations should be determined by the scientist.	
Positive Control	CEM	

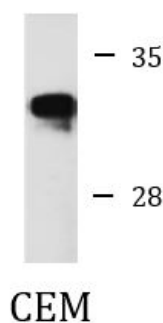
Properties

Form	Liquid
Purification	Purification with Protein A and immunogen peptide.
Buffer	PBS and 0.09% (W/V) Sodium azide.
Preservative	0.09% (W/V) Sodium azide
Storage instruction	For continuous use, store undiluted antibody at 2-8°C for up to a week. For long-term storage, aliquot and store at -20°C or below. Storage in frost free freezers is not recommended. Avoid repeated freeze/thaw cycles. Suggest spin the vial prior to opening. The antibody solution should be gently mixed before use.

Bioinformation

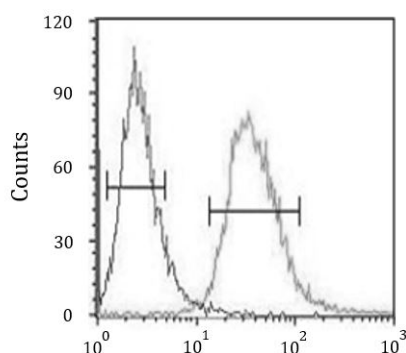
Gene Symbol	TSPAN7
Gene Full Name	tetraspanin 7
Background	The protein encoded by this gene is a member of the transmembrane 4 superfamily, also known as the tetraspanin family. Most of these members are cell-surface proteins that are characterized by the presence of four hydrophobic domains. The proteins mediate signal transduction events that play a role in the regulation of cell development, activation, growth and motility. This encoded protein is a cell surface glycoprotein and may have a role in the control of neurite outgrowth. It is known to complex with integrins. This gene is associated with X-linked mental retardation and neuropsychiatric diseases such as Huntington's chorea, fragile X syndrome and myotonic dystrophy. [provided by RefSeq, Jul 2008]
Function	May be involved in cell proliferation and cell motility. [UniProt]
Calculated Mw	28 kDa

Images



ARG57523 anti-TSPAN7 antibody WB image

Western blot: 35 µg of CEM cell lysate stained with ARG57523 anti-TSPAN7 antibody.



ARG57523 anti-TSPAN7 antibody FACS image

Flow Cytometry: CEM cells stained with ARG57523 anti-TSPAN7 antibody (right histogram) or without primary antibody as control (left histogram), followed by incubation with FITC labelled secondary antibody.