

ARG57529 anti-CD49a / Integrin alpha 1 antibody

Package: 50 µg
Store at: -20°C

Summary

Product Description	Goat Polyclonal antibody recognizes CD49a / Integrin alpha 1
Tested Reactivity	Hu
Tested Application	WB
Host	Goat
Clonality	Polyclonal
Isotype	IgG
Target Name	CD49a / Integrin alpha 1
Species	Human
Immunogen	Synthetic peptide around the internal region of Human CD49a / Integrin alpha 1. (C-DKHDFQDSVRIT)
Conjugation	Un-conjugated
Alternate Names	VLA-1; CD49a; Integrin alpha-1; Laminin and collagen receptor; VLA1; CD antigen CD49a; CD49 antigen-like family member A

Application Instructions

Application table	Application	Dilution
	WB	0.3 - 1 µg/ml
Application Note	WB: Recommend incubate at RT for 1h. * The dilutions indicate recommended starting dilutions and the optimal dilutions or concentrations should be determined by the scientist.	
Observed Size	150 kDa (glycosylated form)	

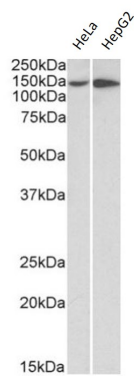
Properties

Form	Liquid
Purification	Affinity purified
Buffer	Tris saline (pH 7.3), 0.02% Sodium azide and 0.5% BSA.
Preservative	0.02% Sodium azide
Stabilizer	0.5% BSA
Concentration	0.5 mg/ml
Storage instruction	For continuous use, store undiluted antibody at 2-8°C for up to a week. For long-term storage, aliquot and store at -20°C or below. Storage in frost free freezers is not recommended. Avoid repeated freeze/thaw cycles. Suggest spin the vial prior to opening. The antibody solution should be gently mixed before use.
Note	For laboratory research only, not for drug, diagnostic or other use.

Bioinformation

Gene Symbol	ITGA1
Gene Full Name	integrin, alpha 1
Background	This gene encodes the alpha 1 subunit of integrin receptors. This protein heterodimerizes with the beta 1 subunit to form a cell-surface receptor for collagen and laminin. The heterodimeric receptor is involved in cell-cell adhesion and may play a role in inflammation and fibrosis. The alpha 1 subunit contains an inserted (I) von Willebrand factor type I domain which is thought to be involved in collagen binding. [provided by RefSeq, Jul 2008]
Function	Integrin alpha-1/beta-1 is a receptor for laminin and collagen. It recognizes the proline-hydroxylated sequence G-F-P-G-E-R in collagen. Involved in anchorage-dependent, negative regulation of EGF-stimulated cell growth. [UniProt]
Calculated Mw	131 kDa (NP_852478.1)

Images



ARG57529 anti-CD49a / Integrin alpha 1 antibody WB image

Western blot: 35 µg of HeLa and HepG2 cell lysates stained with ARG57529 anti-CD49a / Integrin alpha 1 antibody at 0.5 µg/ml dilution. Primary incubation was 1 hour.