

## ARG57557 anti-SCUBE2 antibody

Package: 100 µl  
Store at: -20°C

### Summary

Product Description	Rabbit Polyclonal antibody recognizes SCUBE2
Tested Reactivity	Hu
Tested Application	IHC-P
Host	Rabbit
Clonality	Polyclonal
Isotype	IgG
Target Name	SCUBE2
Species	Human
Immunogen	KLH-conjugated synthetic peptide corresponding to aa. 251-280 (Center) of Human SCUBE2.
Conjugation	Un-conjugated
Alternate Names	Signal peptide, CUB and EGF-like domain-containing protein 2; CEGF1; CEGB1; Protein CEGP1; CEGP1

### Application Instructions

Application table	Application	Dilution
	IHC-P	1:50 - 1:100
Application Note	* The dilutions indicate recommended starting dilutions and the optimal dilutions or concentrations should be determined by the scientist.	

### Properties

Form	Liquid
Purification	Purification with Protein A and immunogen peptide.
Buffer	PBS and 0.09% (W/V) Sodium azide.
Preservative	0.09% (W/V) Sodium azide.
Storage instruction	For continuous use, store undiluted antibody at 2-8°C for up to a week. For long-term storage, aliquot and store at -20°C or below. Storage in frost free freezers is not recommended. Avoid repeated freeze/thaw cycles. Suggest spin the vial prior to opening. The antibody solution should be gently mixed before use.
Note	For laboratory research only, not for drug, diagnostic or other use.

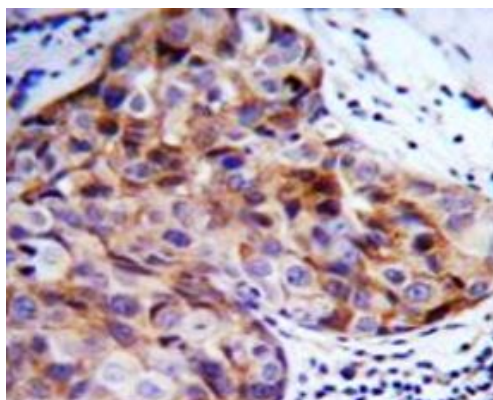
### Bioinformation

Gene Symbol	SCUBE2
Gene Full Name	signal peptide, CUB domain, EGF-like 2

Function	Lipid-binding protein required for SHH long-range signaling by binding to the dually lipid-modified SHH (ShhNp) and by promoting ShhNp mobilization, solubilization and release from the cell membrane (PubMed:22902404, PubMed:22677548). Acts by enhancing the proteolytic processing (shedding) of the lipid-modified N- and C- terminal of ShhNp at the cell surface (PubMed:24522195). Synergizes with DISP1 to increase SHH secretion (PubMed:22902404). Probable cell surface coreceptor for VEGFR2 involved in VEGFR2-mediated angiogenesis (PubMed:27834687). [UniProt]
Calculated Mw	110 kDa
Cellular Localization	Secreted.

## Images

---



ARG57557 anti-SCUBE2 antibody IHC-P image

Immunohistochemistry: Formalin-fixed and paraffin-embedded Human breast carcinoma tissue stained with ARG57557 anti-SCUBE2 antibody.

---