

ARG57559 anti-Neuropeptide Y antibody

Package: 50 µg
Store at: -20°C

Summary

Product Description	Rabbit Polyclonal antibody recognizes Neuropeptide Y
Tested Reactivity	Hu, Ms, Rat
Tested Application	IHC-P
Specificity	The sequence of immunogen for this Neuropeptide Y antibody is 100% homologous in Human, Mouse and Rat.
Host	Rabbit
Clonality	Polyclonal
Isotype	IgG
Target Name	Neuropeptide Y
Species	Human
Immunogen	Synthetic peptide around the center region of Human Neuropeptide Y. (YPSKPDNPGEDAPAEDMARYYSALRHYINLITRQRY)
Conjugation	Un-conjugated
Alternate Names	Pro-neuropeptide Y; Neuropeptide tyrosine; NPY; CPON; PYY4

Application Instructions

Application table	Application	Dilution
	IHC-P	0.5 - 1 µg/ml
Application Note	* The dilutions indicate recommended starting dilutions and the optimal dilutions or concentrations should be determined by the scientist.	

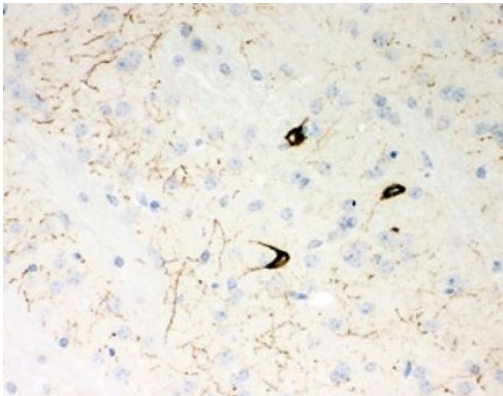
Properties

Form	Liquid
Purification	Affinity purification with immunogen.
Buffer	PBS, 0.025% Sodium azide and 2.5% BSA.
Preservative	0.025% Sodium azide
Stabilizer	2.5% BSA
Concentration	0.5 mg/ml
Storage instruction	For continuous use, store undiluted antibody at 2-8°C for up to a week. For long-term storage, aliquot and store at -20°C or below. Storage in frost free freezers is not recommended. Avoid repeated freeze/thaw cycles. Suggest spin the vial prior to opening. The antibody solution should be gently mixed before use.
Note	For laboratory research only, not for drug, diagnostic or other use.

Bioinformation

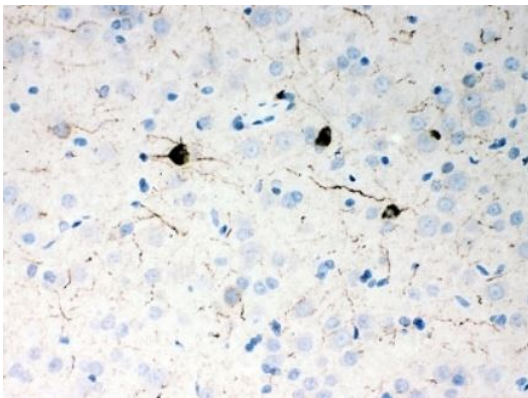
Gene Symbol	NPY
Gene Full Name	neuropeptide Y
Background	This gene encodes a neuropeptide that is widely expressed in the central nervous system and influences many physiological processes, including cortical excitability, stress response, food intake, circadian rhythms, and cardiovascular function. The neuropeptide functions through G protein-coupled receptors to inhibit adenylyl cyclase, activate mitogen-activated protein kinase (MAPK), regulate intracellular calcium levels, and activate potassium channels. A polymorphism in this gene resulting in a change of leucine 7 to proline in the signal peptide is associated with elevated cholesterol levels, higher alcohol consumption, and may be a risk factor for various metabolic and cardiovascular diseases. The protein also exhibits antimicrobial activity against bacteria and fungi. [provided by RefSeq, Oct 2014]
Function	NPY is implicated in the control of feeding and in secretion of gonadotrophin-release hormone. [UniProt]
Highlight	Related news: Studying obesity and appetite control by quantifying orexigenic and anorexigenic hormones;
Calculated Mw	11 kDa
PTM	The neuropeptide Y form is cleaved at Pro-30 by the prolyl endopeptidase FAP (seprase) activity (in vitro). [UniProt]

Images



ARG57559 anti-Neuropeptide Y antibody IHC-P image

Immunohistochemistry: Formalin-fixed and paraffin-embedded Mouse brain tissue stained with ARG57559 anti-Neuropeptide Y antibody.



ARG57559 anti-Neuropeptide Y antibody IHC-P image

Immunohistochemistry: Formalin-fixed and paraffin-embedded Rat brain tissue stained with ARG57559 anti-Neuropeptide Y antibody.