

ARG57560 anti-SCUBE2 antibody

Package: 50 µg
Store at: -20°C

Summary

Product Description	Rabbit Polyclonal antibody recognizes SCUBE2
Tested Reactivity	Hu
Predict Reactivity	Rat
Tested Application	ICC/IF, WB
Host	Rabbit
Clonality	Polyclonal
Isotype	IgG
Target Name	SCUBE2
Species	Human
Immunogen	Synthetic peptide (17 aa) within aa. 480-530 of Human SCUBE2.
Conjugation	Un-conjugated
Alternate Names	Signal peptide, CUB and EGF-like domain-containing protein 2; CEGF1; CEGB1; Protein CEGP1; CEGP1

Application Instructions

Application table	Application	Dilution
	ICC/IF	20 µg/ml
	WB	1 µg/ml
Application Note	* The dilutions indicate recommended starting dilutions and the optimal dilutions or concentrations should be determined by the scientist.	
Positive Control	Daudi cells.	

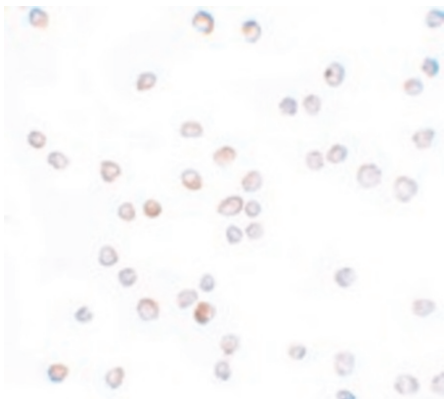
Properties

Form	Liquid
Purification	Affinity purification with immunogen.
Buffer	PBS and 0.02% Sodium azide.
Preservative	0.02% Sodium azide
Concentration	1 mg/ml
Storage instruction	For continuous use, store undiluted antibody at 2-8°C for up to a week. For long-term storage, aliquot and store at -20°C or below. Storage in frost free freezers is not recommended. Avoid repeated freeze/thaw cycles. Suggest spin the vial prior to opening. The antibody solution should be gently mixed before use.
Note	For laboratory research only, not for drug, diagnostic or other use.

Bioinformation

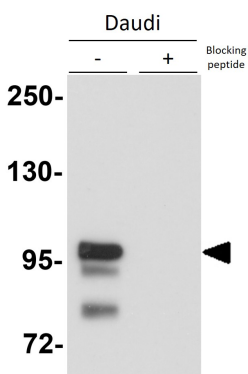
Gene Symbol	SCUBE2
Gene Full Name	signal peptide, CUB domain, EGF-like 2
Function	Lipid-binding protein required for SHH long-range signaling by binding to the dually lipid-modified SHH (ShhNp) and by promoting ShhNp mobilization, solubilization and release from the cell membrane (PubMed:22902404, PubMed:22677548). Acts by enhancing the proteolytic processing (shedding) of the lipid-modified N- and C- terminal of ShhNp at the cell surface (PubMed:24522195). Synergizes with DISP1 to increase SHH secretion (PubMed:22902404). Probable cell surface coreceptor for VEGFR2 involved in VEGFR2-mediated angiogenesis (PubMed:27834687). [UniProt]
Calculated Mw	110 kDa

Images



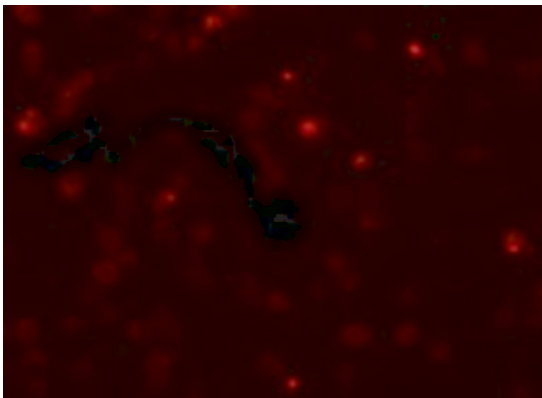
ARG57560 anti-SCUBE2 antibody ICC/IF image

Immunocytochemistry: Daudi cells stained with ARG57560 anti-SCUBE2 antibody at 20 µg/ml dilution.



ARG57560 anti-SCUBE2 antibody WB image

Western blot: Daudi cell lysate stained with ARG57560 anti-SCUBE2 antibody at 1 µg/ml dilution in the absence and the presence of blocking peptide.



ARG57560 anti-SCUBE2 antibody ICC/IF image

Immunofluorescence: Daudi cells stained with ARG57560 anti-SCUBE2 antibody at 20 µg/ml dilution