

## ARG57569 anti-CD138 / Syndecan 1 antibody [MI15]

Package: 50 µg  
Store at: -20°C

### Summary

Product Description	Mouse Monoclonal antibody [MI15] recognizes CD138 / Syndecan 1
Tested Reactivity	Hu, Rat, NHuPrm
Tested Application	CyTOF®-candidate, FACS, ICC/IF, IHC-P, IP, WB
Specificity	The antibody recognizes CD138 (syndecan 1), a heparan sulfate proteoglycan protein expressed mainly in the epidermis and plasma cells, but also in growth factorstimulated lymphocytes. The MWs of the glycosylated CD138 were variety, and MW of the non-glycosylated core protein (dimmer form) was around 60-80 kda.
Host	Mouse
Clonality	Monoclonal
Clone	MI15
Isotype	IgG1
Target Name	CD138 / Syndecan 1
Species	Human
Immunogen	A mixture of U266 and XG-1 Human myeloma cell lines.
Conjugation	Un-conjugated
Alternate Names	CD antigen CD138; syndecan; CD138; SDC; Syndecan-1; SYND1

### Application Instructions

Application table	Application	Dilution
	CyTOF®-candidate	Assay-dependent
	FACS	1 - 4 µg/ml
	ICC/IF	Assay-dependent
	IHC-P	Assay-dependent
	IP	Assay-dependent
	WB	1 - 3 µg/ml
Application Note	* The dilutions indicate recommended starting dilutions and the optimal dilutions or concentrations should be determined by the scientist.	

### Properties

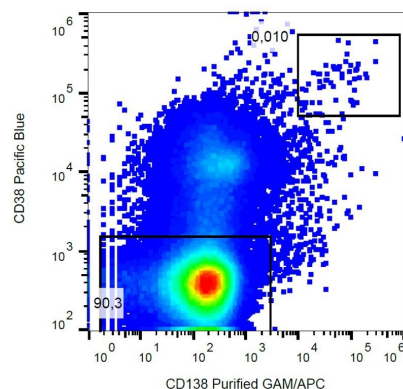
Form	Liquid
Purification	Purification with Protein A.
Purity	> 95% (by SDS-PAGE)

Buffer	PBS (pH 7.4) and 15 mM Sodium azide.
Preservative	15mM Sodium azide
Concentration	1 mg/ml
Storage instruction	For continuous use, store undiluted antibody at 2-8°C for up to a week. For long-term storage, aliquot and store at -20°C or below. Storage in frost free freezers is not recommended. Avoid repeated freeze/thaw cycles. Suggest spin the vial prior to opening. The antibody solution should be gently mixed before use.
Note	For laboratory research only, not for drug, diagnostic or other use.

## Bioinformation

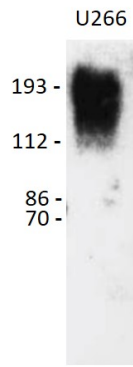
Gene Symbol	SDC1
Gene Full Name	SDC1
Background	The protein encoded by this gene is a transmembrane (type I) heparan sulfate proteoglycan and is a member of the syndecan proteoglycan family. The syndecans mediate cell binding, cell signaling, and cytoskeletal organization and syndecan receptors are required for internalization of the HIV-1 tat protein. The syndecan-1 protein functions as an integral membrane protein and participates in cell proliferation, cell migration and cell-matrix interactions via its receptor for extracellular matrix proteins. Altered syndecan-1 expression has been detected in several different tumor types. While several transcript variants may exist for this gene, the full-length natures of only two have been described to date. These two represent the major variants of this gene and encode the same protein. [provided by RefSeq, Jul 2008]
Function	Cell surface proteoglycan that bears both heparan sulfate and chondroitin sulfate and that links the cytoskeleton to the interstitial matrix. [UniProt]
Highlight	Related products: <a href="#">CD138 antibodies</a> ; <a href="#">CD138 ELISA Kits</a> ; <a href="#">Anti-Mouse IgG secondary antibodies</a> ; Related news: <a href="#">CyTOF-candidate Antibodies</a>
Calculated Mw	32 kDa
PTM	Shedding is enhanced by a number of factors such as heparanase, thrombin or EGF. Also by stress and wound healing. PMA-mediated shedding is inhibited by TIMP3. [UniProt]

## Images



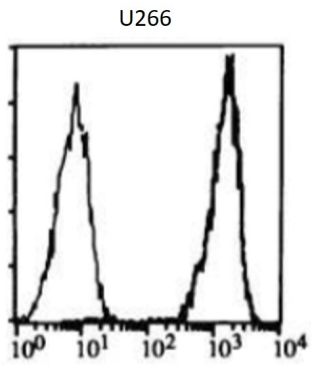
ARG57569 anti-CD138 / Syndecan 1 antibody [MI15] FACS image

Flow Cytometry: Human peripheral blood stained with ARG57569 anti-CD138 / Syndecan 1 antibody [MI15] (right histogram) or without primary antibody as control (left histogram).



ARG57569 anti-CD138 / Syndecan 1 antibody [MI15] WB image

Western blot: 50  $\mu$ g of U266 cell lysate stained with ARG57569 anti-CD138 / Syndecan 1 antibody [MI15] at 1.5  $\mu$ g/ml dilution.



ARG57569 anti-CD138 / Syndecan 1 antibody [MI15] FACS image

Flow Cytometry: U266 cells stained with ARG57569 anti-CD138 / Syndecan 1 antibody [MI15] (right histogram) or isotype control (left histogram).