

ARG57584 anti-BAP1 / UCHL2 antibody

Package: 100 µl
Store at: -20°C

Summary

| | |
|---------------------|--|
| Product Description | Rabbit Polyclonal antibody recognizes BAP1 / UCHL2 |
| Tested Reactivity | Hu, Ms, Rat |
| Predict Reactivity | Bov, Zfsh |
| Tested Application | WB |
| Host | Rabbit |
| Clonality | Polyclonal |
| Isotype | IgG |
| Target Name | BAP1 / UCHL2 |
| Species | Human |
| Immunogen | KLH-conjugated synthetic peptide corresponding to aa. 36-66 (N-terminus) of Human BAP1 / UCHL2. |
| Conjugation | Un-conjugated |
| Alternate Names | Cerebral protein 6; HUCEP-13; hucep-6; BRCA1-associated protein 1; Ubiquitin carboxyl-terminal hydrolase BAP1; EC 3.4.19.12; UCHL2 |

Application Instructions

| | | |
|-------------------|--|----------|
| Application table | Application | Dilution |
| | WB | 1:1000 |
| Application Note | * The dilutions indicate recommended starting dilutions and the optimal dilutions or concentrations should be determined by the scientist. | |
| Positive Control | Mouse ovary | |

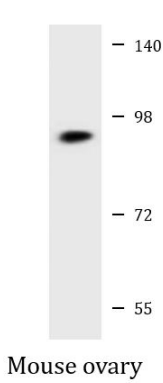
Properties

| | |
|---------------------|--|
| Form | Liquid |
| Purification | Purification with Protein A and immunogen peptide. |
| Buffer | PBS and 0.09% (W/V) Sodium azide. |
| Preservative | 0.09% (W/V) Sodium azide. |
| Storage instruction | For continuous use, store undiluted antibody at 2-8°C for up to a week. For long-term storage, aliquot and store at -20°C or below. Storage in frost free freezers is not recommended. Avoid repeated freeze/thaw cycles. Suggest spin the vial prior to opening. The antibody solution should be gently mixed before use. |
| Note | For laboratory research only, not for drug, diagnostic or other use. |

Bioinformation

| | |
|-----------------------|--|
| Gene Symbol | BAP1 |
| Gene Full Name | BRCA1 associated protein-1 (ubiquitin carboxy-terminal hydrolase) |
| Background | This gene belongs to the ubiquitin C-terminal hydrolase subfamily of deubiquitinating enzymes that are involved in the removal of ubiquitin from proteins. The encoded enzyme binds to the breast cancer type 1 susceptibility protein (BRCA1) via the RING finger domain of the latter and acts as a tumor suppressor. In addition, the enzyme may be involved in regulation of transcription, regulation of cell cycle and growth, response to DNA damage and chromatin dynamics. Germline mutations in this gene may be associated with tumor predisposition syndrome (TPDS), which involves increased risk of cancers including malignant mesothelioma, uveal melanoma and cutaneous melanoma. [provided by RefSeq, May 2013] |
| Function | Deubiquitinating enzyme that plays a key role in chromatin by mediating deubiquitination of histone H2A and HCFC1. Catalytic component of the PR-DUB complex, a complex that specifically mediates deubiquitination of histone H2A monoubiquitinated at 'Lys-119' (H2AK119ub1). Does not deubiquitinate monoubiquitinated histone H2B. Acts as a regulator of cell growth by mediating deubiquitination of HCFC1 N-terminal and C-terminal chains, with some specificity toward 'Lys-48'-linked polyubiquitin chains compared to 'Lys-63'-linked polyubiquitin chains. Deubiquitination of HCFC1 does not lead to increase stability of HCFC1. Interferes with the BRCA1 and BARD1 heterodimer activity by inhibiting their ability to mediate ubiquitination and autoubiquitination. It however does not mediate deubiquitination of BRCA1 and BARD1. Able to mediate autodeubiquitination via intramolecular interactions to counteract monoubiquitination at the nuclear localization signal (NLS), thereby protecting it from cytoplasmic sequestration. Acts as a tumor suppressor. [UniProt] |
| Calculated Mw | 80 kDa |
| PTM | Ubiquitinated: monoubiquitinated at multiple site of its nuclear localization signal (NLS) BY UBE2O, leading to cytoplasmic retention. Able to mediate autodeubiquitination via intramolecular interactions to counteract cytoplasmic retention. [UniProt] |
| Cellular Localization | Cytoplasm. Nucleus. Note=Mainly nuclear. Binds to chromatin. Localizes to the cytoplasm when monoubiquitinated by the E2/E3 hybrid ubiquitin-protein ligase UBE2O (PubMed:24703950). [UniProt] |

Images



ARG57584 anti-BAP1 / UCHL2 antibody WB image

Western blot: 20 µg of Mouse ovary lysate stained with ARG57584 anti-BAP1 / UCHL2 antibody at 1:2000 dilution.