

## ARG57625 anti-Wnt10a antibody

Package: 50 µg  
Store at: -20°C

### Summary

Product Description	Rabbit Polyclonal antibody recognizes Wnt10a
Tested Reactivity	Hu, Ms
Tested Application	IHC-P, WB
Specificity	This Wnt10a antibody is predicted to not cross-react with Wnt10b.
Host	Rabbit
Clonality	Polyclonal
Isotype	IgG
Target Name	Wnt10a
Species	Human
Immunogen	Synthetic peptide (14 aa) within aa. 300-350 of Human Wnt10a.
Conjugation	Un-conjugated
Alternate Names	STHAG4; Protein Wnt-10a; SSPS; ODD

### Application Instructions

Application table	Application	Dilution
	IHC-P	5 - 20 µg/ml
	WB	1 - 2 µg/ml
Application Note	* The dilutions indicate recommended starting dilutions and the optimal dilutions or concentrations should be determined by the scientist.	
Positive Control	RAW264.7 cell lysate.	
Observed Size	46 kDa	

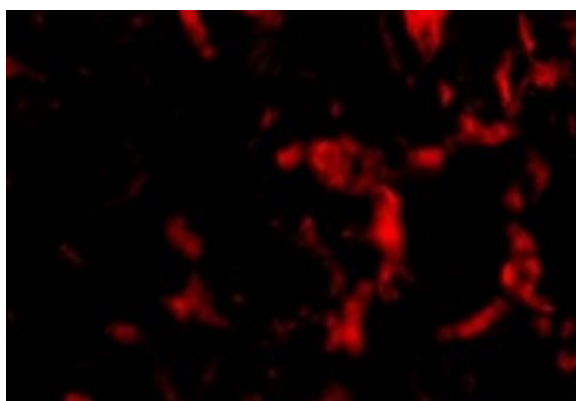
### Properties

Form	Liquid
Purification	Affinity purification with immunogen.
Buffer	PBS and 0.02% Sodium azide
Preservative	0.02% Sodium azide
Concentration	1 mg/ml
Storage instruction	For continuous use, store undiluted antibody at 2-8°C for up to a week. For long-term storage, aliquot and store at -20°C or below. Storage in frost free freezers is not recommended. Avoid repeated freeze/thaw cycles. Suggest spin the vial prior to opening. The antibody solution should be gently mixed before use.

## Bioinformation

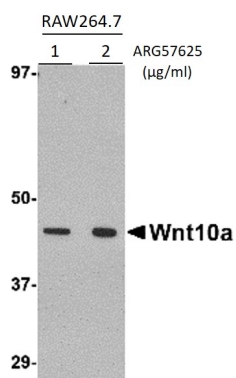
Gene Symbol	WNT10A
Gene Full Name	wingless-type MMTV integration site family, member 10A
Background	The WNT gene family consists of structurally related genes which encode secreted signaling proteins. These proteins have been implicated in oncogenesis and in several developmental processes, including regulation of cell fate and patterning during embryogenesis. This gene is a member of the WNT gene family. It is strongly expressed in the cell lines of promyelocytic leukemia and Burkitt's lymphoma. In addition, it and another family member, the WNT6 gene, are strongly coexpressed in colorectal cancer cell lines. The gene overexpression may play key roles in carcinogenesis through activation of the WNT-beta-catenin-TCF signaling pathway. This gene and the WNT6 gene are clustered in the chromosome 2q35 region. [provided by RefSeq, Jul 2008]
Function	Ligand for members of the frizzled family of seven transmembrane receptors. Probable developmental protein. May be a signaling molecule important in CNS development. Is likely to signal over only few cell diameters. [UniProt]
Calculated Mw	46 kDa
PTM	Palmitoleylation is required for efficient binding to frizzled receptors. Depalmitoleylation leads to Wnt signaling pathway inhibition. [UniProt]

## Images



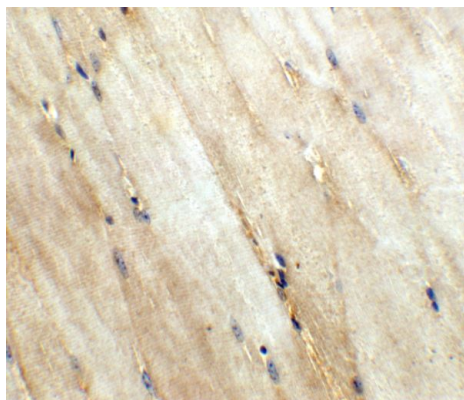
ARG57625 anti-Wnt10a antibody IHC-P image

Immunohistochemistry: Human skeletal muscle tissue stained with ARG57625 anti-Wnt10a antibody at 20 µg/ml dilution.



ARG57625 anti-Wnt10a antibody WB image

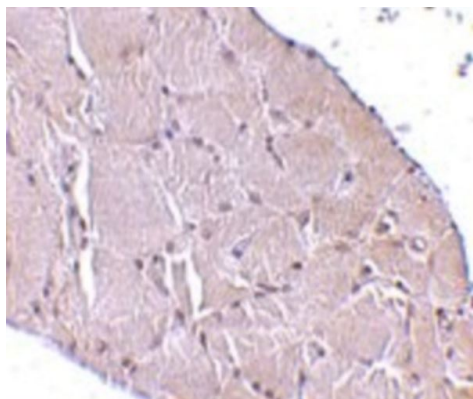
Western blot: RAW264.7 cell lysate stained with ARG57625 anti-Wnt10a antibody at 1 and 2 µg/ml dilution.



ARG57625 anti-Wnt10a antibody IHC-P image

Immunohistochemistry: Mouse skeletal muscle tissue stained with ARG57625 anti-Wnt10a antibody at 5 µg/ml dilution.

---



ARG57625 anti-Wnt10a antibody IHC-P image

Immunohistochemistry: Human skeletal muscle tissue stained with ARG57625 anti-Wnt10a antibody at 10 µg/ml dilution.

---