

ARG57748 anti-SSTR1 antibody

Package: 50 µg
Store at: -20°C

Summary

Product Description	Rabbit Polyclonal antibody recognizes SSTR1
Tested Reactivity	Hu, Ms, Rat
Tested Application	IHC-P, WB
Host	Rabbit
Clonality	Polyclonal
Isotype	IgG
Target Name	SSTR1
Species	Human
Immunogen	Synthetic peptide around aa. 361-381 (RAYSVEDFQPENLESGGVFRN) of Human SSTR1. (100% homologous in Human, Mouse and Rat).
Conjugation	Un-conjugated
Alternate Names	SRIF-2; SS-1-R; SS1R; Somatostatin receptor type 1; SS1-R

Application Instructions

Application table	Application	Dilution
	IHC-P	1 - 5 µg/ml
	WB	0.5 - 1 µg/ml
Application Note	IHC-P: Antigen Retrieval: Boil tissue section in Citrate buffer (pH 6.0) for 20 min, followed by cooling at RT. * The dilutions indicate recommended starting dilutions and the optimal dilutions or concentrations should be determined by the scientist.	
Observed Size	42 kDa ~ 80 kDa due to glycosylation.	

Properties

Form	Liquid
Purification	Affinity purification with immunogen.
Buffer	PBS, 0.025% Sodium azide and 2.5% BSA.
Preservative	0.025% Sodium azide
Stabilizer	2.5% BSA
Concentration	0.5 mg/ml
Storage instruction	For continuous use, store undiluted antibody at 2-8°C for up to a week. For long-term storage, aliquot and store at -20°C or below. Storage in frost free freezers is not recommended. Avoid repeated freeze/thaw cycles. Suggest spin the vial prior to opening. The antibody solution should be gently mixed

before use.

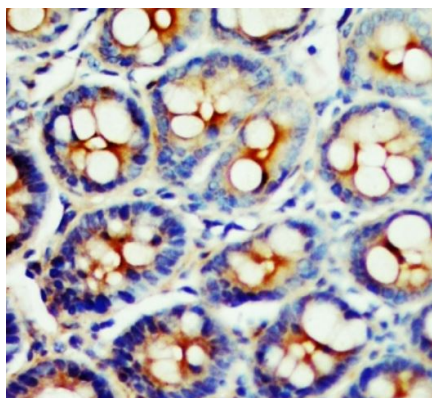
Note

For laboratory research only, not for drug, diagnostic or other use.

Bioinformation

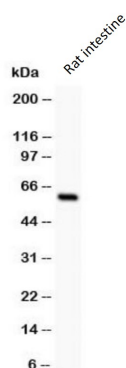
Gene Symbol	SSTR1
Gene Full Name	somatostatin receptor 1
Background	Somatostatins are peptide hormones that regulate diverse cellular functions such as neurotransmission, cell proliferation, and endocrine signaling as well as inhibiting the release of many hormones and other secretory proteins. Somatostatin has two active forms of 14 and 28 amino acids. The biological effects of somatostatins are mediated by a family of G-protein coupled somatostatin receptors that are expressed in a tissue-specific manner. The protein encoded by this gene is a member of the superfamily of somatostatin receptors having seven transmembrane segments. Somatostatin receptors form homodimers and heterodimers with other members of the superfamily as well as with other G-protein coupled receptors and receptor tyrosine kinases. This somatostatin receptor has greater affinity for somatostatin-14 than -28. [provided by RefSeq, Jul 2012]
Function	Receptor for somatostatin with higher affinity for somatostatin-14 than -28. This receptor is coupled via pertussis toxin sensitive G proteins to inhibition of adenylyl cyclase. In addition it stimulates phosphotyrosine phosphatase and Na(+)/H(+) exchanger via pertussis toxin insensitive G proteins. [UniProt]
Calculated Mw	43 kDa

Images



ARG57748 anti-SSTR1 antibody IHC-P image

Immunohistochemistry: Formalin-fixed and paraffin-embedded Rat intestine tissue stained with ARG57748 anti-SSTR1 antibody at 1 µg/ml. Antigen Retrieval: Boil tissue section in Citrate buffer (pH 6.0) for 20 min followed by cooling at RT.



ARG57748 anti-SSTR1 antibody WB image

Western blot: Rat intestine lysate stained with ARG57748 anti-SSTR1 antibody.