

## ARG57807 anti-CCL3 / MIP1 alpha antibody

Package: 100 µl  
Store at: -20°C

### Summary

Product Description	Rabbit Polyclonal antibody recognizes CCL3 / MIP1 alpha
Tested Reactivity	Hu, Ms
Tested Application	IHC-P, WB
Host	Rabbit
Clonality	Polyclonal
Isotype	IgG
Target Name	CCL3 / MIP1 alpha
Species	Human
Immunogen	KLH-conjugated synthetic peptide corresponding to aa. 59-87 (C-terminus) of Human CCL3 / MIP1 alpha.
Conjugation	Un-conjugated
Alternate Names	MIP-1-alpha; SIS-beta; PAT 464.1; Tonsillar lymphocyte LD78 alpha protein; G0/G1 switch regulatory protein 19-1; Small-inducible cytokine A3; C-C motif chemokine 3; LD78-alpha; 4-69; Macrophage inflammatory protein 1-alpha; MIP1A; SCYA3; GOS19-1; LD78ALPHA

### Application Instructions

Application table	Application	Dilution
	IHC-P	1:50 - 1:100
	WB	1:1000
Application Note	* The dilutions indicate recommended starting dilutions and the optimal dilutions or concentrations should be determined by the scientist.	
Positive Control	Mouse liver	

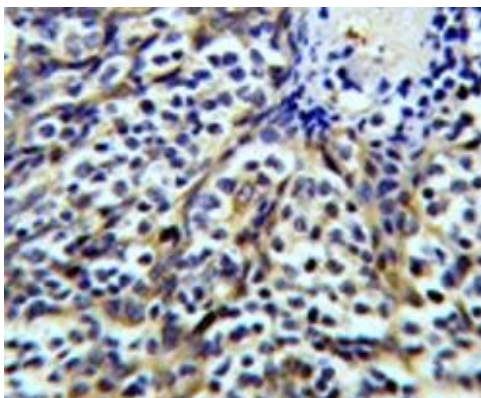
### Properties

Form	Liquid
Purification	Purification with Protein A and immunogen peptide.
Buffer	PBS and 0.09% (W/V) Sodium azide.
Preservative	0.09% (W/V) Sodium azide.
Storage instruction	For continuous use, store undiluted antibody at 2-8°C for up to a week. For long-term storage, aliquot and store at -20°C or below. Storage in frost free freezers is not recommended. Avoid repeated freeze/thaw cycles. Suggest spin the vial prior to opening. The antibody solution should be gently mixed before use.
Note	For laboratory research only, not for drug, diagnostic or other use.

## Bioinformation

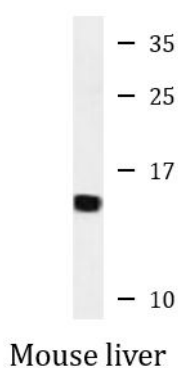
Gene Symbol	CCL3
Gene Full Name	chemokine (C-C motif) ligand 3
Background	This locus represents a small inducible cytokine. The encoded protein, also known as macrophage inflammatory protein 1 alpha, plays a role in inflammatory responses through binding to the receptors CCR1, CCR4 and CCR5. Polymorphisms at this locus may be associated with both resistance and susceptibility to infection by human immunodeficiency virus type 1. [provided by RefSeq, Sep 2010]
Function	Monokine with inflammatory and chemokinetic properties. Binds to CCR1, CCR4 and CCR5. One of the major HIV-suppressive factors produced by CD8+ T-cells. Recombinant MIP-1-alpha induces a dose-dependent inhibition of different strains of HIV-1, HIV-2, and simian immunodeficiency virus (SIV). [UniProt]
Calculated Mw	10 kDa
PTM	N-terminal processed form LD78-alpha(4-69) is produced by proteolytic cleavage after secretion from HTLV1-transformed T-cells. [UniProt]
Cellular Localization	Secreted. [UniProt]

## Images



ARG57807 anti-CCL3 / MIP1 alpha antibody IHC-P image

Immunohistochemistry: Formalin-fixed and paraffin-embedded Human tonsil tissue stained with ARG57807 anti-CCL3 / MIP1 alpha antibody.



ARG57807 anti-CCL3 / MIP1 alpha antibody WB image

Western blot: 35 µg of Mouse liver lysate stained with ARG57807 anti-CCL3 / MIP1 alpha antibody.