

## ARG57849 anti-Calumenin antibody

Package: 100 µl  
Store at: -20°C

### Summary

|                     |   |
|---------------------|---|
| Product Description | Rabbit Polyclonal antibody recognizes Calumenin |
| Tested Reactivity   | Hu, Ms, Rat                                     |
| Tested Application  | ICC/IF, IHC-P, WB                               |
| Host                | Rabbit  |
| Clonality           | Polyclonal                                      |
| Isotype             | IgG   |
| Target Name         | Calumenin                                       |
| Species             | Human   |
| Immunogen           | Recombinant protein of Human Calumenin.         |
| Conjugation         | Un-conjugated                                   |
| Alternate Names     | Crocalbin; IEF SSP 9302; Calumenin              |

### Application Instructions

|                   |  |                |
|-------------------|--|----------------|
| Application table | Application  | Dilution       |
|                   | ICC/IF   | 1:50 - 1:200   |
|                   | IHC-P  | 1:50 - 1:200   |
|                   | WB   | 1:500 - 1:2000 |
| Application Note  | * The dilutions indicate recommended starting dilutions and the optimal dilutions or concentrations should be determined by the scientist. |                |
| Positive Control  | Mouse lung   |                |

### Properties

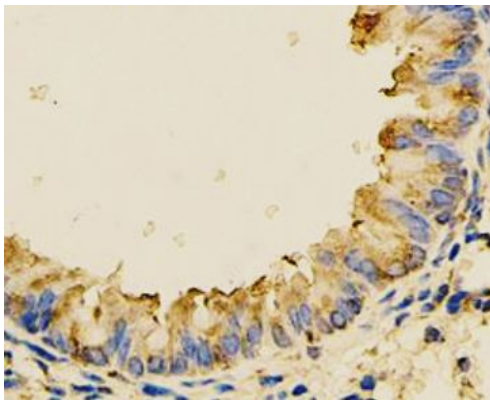
|                     |   |
|---------------------|---|
| Form                | Liquid  |
| Purification        | Affinity purified.  |
| Buffer              | PBS (pH 7.3), 0.02% Sodium azide and 50% Glycerol.  |
| Preservative        | 0.02% Sodium azide  |
| Stabilizer          | 50% Glycerol  |
| Storage instruction | For continuous use, store undiluted antibody at 2-8°C for up to a week. For long-term storage, aliquot and store at -20°C. Storage in frost free freezers is not recommended. Avoid repeated freeze/thaw cycles. Suggest spin the vial prior to opening. The antibody solution should be gently mixed before use. |
| Note                | For laboratory research only, not for drug, diagnostic or other use.  |

## Bioinformation

---

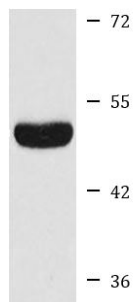
|                       |  |
|-----------------------|--|
| Gene Symbol           | CALU   |
| Gene Full Name        | calumenin  |
| Background            | The product of this gene is a calcium-binding protein localized in the endoplasmic reticulum (ER) and it is involved in such ER functions as protein folding and sorting. This protein belongs to a family of multiple EF-hand proteins (CERC) that include reticulocalbin, ERC-55, and Cab45 and the product of this gene. Alternatively spliced transcript variants encoding different isoforms have been identified. [provided by RefSeq, Oct 2008] |
| Function              | Involved in regulation of vitamin K-dependent carboxylation of multiple N-terminal glutamate residues. Seems to inhibit gamma-carboxylase GGCX. Binds 7 calcium ions with a low affinity (By similarity). [UniProt]  |
| Calculated Mw         | 37 kDa   |
| Cellular Localization | Endoplasmic reticulum lumen, Secreted, Melanosome, Sarcoplasmic reticulum lumen. [UniProt]   |

## Images



ARG57849 anti-Calumenin antibody IHC-P image

Immunohistochemistry: Paraffin-embedded Mouse lung stained with ARG57849 anti-Calumenin antibody at 1:100 dilution.



Mouse lung

ARG57849 anti-Calumenin antibody WB image

Western blot: 25 µg of Mouse lung lysate stained with ARG57849 anti-Calumenin antibody at 1:1000 dilution.