

ARG57881 anti-S100A10 antibody

Package: 100 µl
Store at: -20°C

Summary

Product Description	Rabbit Polyclonal antibody recognizes S100A10
Tested Reactivity	Hu, Ms, Rat, Mk
Tested Application	ICC/IF, IHC-P, WB
Host	Rabbit
Clonality	Polyclonal
Isotype	IgG
Target Name	S100A10
Species	Human
Immunogen	Recombinant fusion protein corresponding to aa. 1-97 of Human S100A10 (NP_002957.1).
Conjugation	Un-conjugated
Alternate Names	CLP11; ANX2LG; ANX2L; Calpactin-1 light chain; Ca[1]; 42C; Calpactin I light chain; CAL1L; GP11; p10; P11; p11; S100 calcium-binding protein A10; Protein S100-A10; Cellular ligand of annexin II; p10 protein

Application Instructions

Application table	Application	Dilution
	ICC/IF	1:50 - 1:200
	IHC-P	1:50 - 1:200
	WB	1:500 - 1:2000
Application Note	* The dilutions indicate recommended starting dilutions and the optimal dilutions or concentrations should be determined by the scientist.	
Positive Control	HeLa	
Observed Size	11 kDa	

Properties

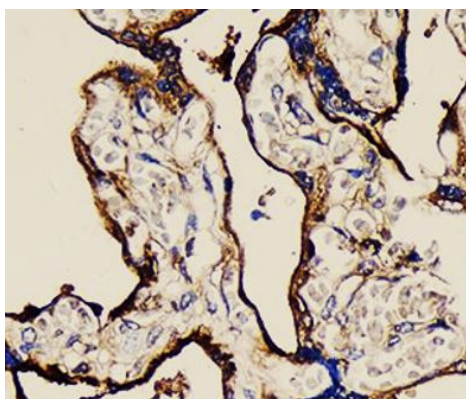
Form	Liquid
Purification	Affinity purified.
Buffer	PBS (pH 7.3), 0.02% Sodium azide and 50% Glycerol.
Preservative	0.02% Sodium azide
Stabilizer	50% Glycerol
Storage instruction	For continuous use, store undiluted antibody at 2-8°C for up to a week. For long-term storage, aliquot and store at -20°C. Storage in frost free freezers is not recommended. Avoid repeated freeze/thaw cycles. Suggest spin the vial prior to opening. The antibody solution should be gently mixed before use.

Note For laboratory research only, not for drug, diagnostic or other use.

Bioinformation

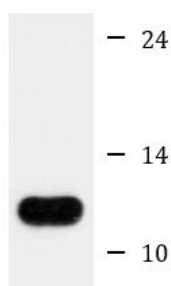
Gene Symbol	S100A10
Gene Full Name	S100 calcium binding protein A10
Background	The protein encoded by this gene is a member of the S100 family of proteins containing 2 EF-hand calcium-binding motifs. S100 proteins are localized in the cytoplasm and/or nucleus of a wide range of cells, and involved in the regulation of a number of cellular processes such as cell cycle progression and differentiation. S100 genes include at least 13 members which are located as a cluster on chromosome 1q21. This protein may function in exocytosis and endocytosis. [provided by RefSeq, Jul 2008]
Function	Because S100A10 induces the dimerization of ANXA2/p36, it may function as a regulator of protein phosphorylation in that the ANXA2 monomer is the preferred target (in vitro) of tyrosine-specific kinase. [UniProt]
Calculated Mw	11 kDa

Images



ARG57881 anti-S100A10 antibody IHC-P image

Immunohistochemistry: Paraffin-embedded Human placenta stained with ARG57881 anti-S100A10 antibody at 1:100 dilution.



HeLa

ARG57881 anti-S100A10 antibody WB image

Western blot: 25 µg of HeLa cell lysate stained with ARG57881 anti-S100A10 antibody at 1:1000 dilution.