

ARG57901
anti-SMN / Gemin1 antibodyPackage: 100 µl
Store at: -20°C

Summary

Product Description	Rabbit Polyclonal antibody recognizes SMN / Gemin1
Tested Reactivity	Hu, Ms, Rat
Tested Application	ICC/IF, IP, WB
Host	Rabbit
Clonality	Polyclonal
Isotype	IgG
Target Name	SMN / Gemin1
Species	Human
Immunogen	Recombinant fusion protein corresponding to aa. 1-197 of Human SMN / Gemin1 (NP_059107.1).
Conjugation	Un-conjugated
Alternate Names	SMNC; BCD541; GEMIN1; TDRD16B; C-BCD541

Application Instructions

Application table	Application	Dilution
	ICC/IF	1:50 - 1:200
	IP	Assay-dependent
	WB	1:500 - 1:2000
Application Note	* The dilutions indicate recommended starting dilutions and the optimal dilutions or concentrations should be determined by the scientist.	
Positive Control	HeLa	
Observed Size	37 kDa	

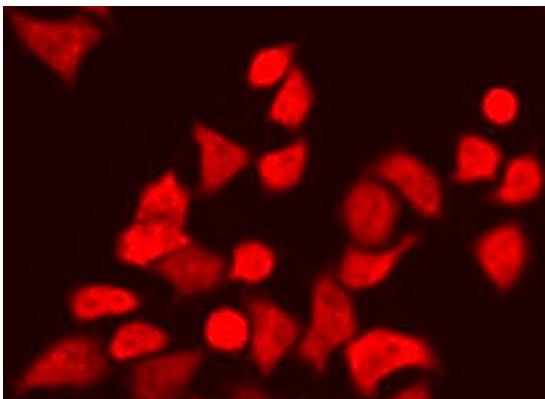
Properties

Form	Liquid
Purification	Affinity purified.
Buffer	PBS (pH 7.3), 0.02% Sodium azide and 50% Glycerol.
Preservative	0.02% Sodium azide
Stabilizer	50% Glycerol
Storage instruction	For continuous use, store undiluted antibody at 2-8°C for up to a week. For long-term storage, aliquot and store at -20°C. Storage in frost free freezers is not recommended. Avoid repeated freeze/thaw cycles. Suggest spin the vial prior to opening. The antibody solution should be gently mixed before use.

Bioinformation

Gene Symbol	SMN2
Gene Full Name	survival of motor neuron 2, centromeric
Background	<p>This gene is part of a 500 kb inverted duplication on chromosome 5q13. This duplicated region contains at least four genes and repetitive elements which make it prone to rearrangements and deletions. The repetitiveness and complexity of the sequence have also caused difficulty in determining the organization of this genomic region. The telomeric and centromeric copies of this gene are nearly identical and encode the same protein. While mutations in the telomeric copy are associated with spinal muscular atrophy, mutations in this gene, the centromeric copy, do not lead to disease. This gene may be a modifier of disease caused by mutation in the telomeric copy. The critical sequence difference between the two genes is a single nucleotide in exon 7, which is thought to be an exon splice enhancer. Note that the nine exons of both the telomeric and centromeric copies are designated historically as exon 1, 2a, 2b, and 3-8. It is thought that gene conversion events may involve the two genes, leading to varying copy numbers of each gene. The full length protein encoded by this gene localizes to both the cytoplasm and the nucleus. Within the nucleus, the protein localizes to subnuclear bodies called gems which are found near coiled bodies containing high concentrations of small ribonucleoproteins (snRNPs). This protein forms heteromeric complexes with proteins such as SIP1 and GEMIN4, and also interacts with several proteins known to be involved in the biogenesis of snRNPs, such as hnRNP U protein and the small nucleolar RNA binding protein. Four transcript variants encoding distinct isoforms have been described. [provided by RefSeq, Sep 2008]</p>
Function	<p>The SMN complex plays a catalyst role in the assembly of small nuclear ribonucleoproteins (snRNPs), the building blocks of the spliceosome. Thereby, plays an important role in the splicing of cellular pre-mRNAs. Most spliceosomal snRNPs contain a common set of Sm proteins SNRPB, SNRPD1, SNRPD2, SNRPD3, SNRPE, SNRPF and SNRPG that assemble in a heptameric protein ring on the Sm site of the small nuclear RNA to form the core snRNP. In the cytosol, the Sm proteins SNRPD1, SNRPD2, SNRPE, SNRPF and SNRPG are trapped in an inactive 6S pICln-Sm complex by the chaperone CLNS1A that controls the assembly of the core snRNP. Dissociation by the SMN complex of CLNS1A from the trapped Sm proteins and their transfer to an SMN-Sm complex triggers the assembly of core snRNPs and their transport to the nucleus. Ensures the correct splicing of U12 intron-containing genes that may be important for normal motor and proprioceptive neurons development. Also required for resolving RNA-DNA hybrids created by RNA polymerase II, that form R-loop in transcription terminal regions, an important step in proper transcription termination. May also play a role in the metabolism of small nucleolar ribonucleoprotein (snoRNPs). [UniProt]</p>
Calculated Mw	32 kDa
Cellular Localization	Cajal body, Cytoplasm, Cytoplasmic granule, Nucleus, Z line, gem, myofibril, sarcomere. [UniProt]

Images

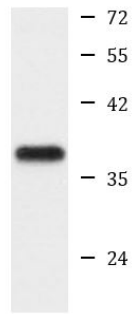


ARG57901 anti-SMN / Gemin1 antibody ICC/IF image

Immunofluorescence: U2OS cells stained with ARG57901 anti-SMN / Gemin1 antibody at 1:100 dilution.

ARG57901 anti-SMN / Gemin1 antibody WB image

Western blot: 25 µg of HeLa cell lysate stained with ARG57901 anti-SMN / Gemin1 antibody at 1:1000 dilution.



HeLa