

## ARG57909 anti-TWF1 / PTK9 antibody

Package: 100 µl  
Store at: -20°C

### Summary

Product Description	Rabbit Polyclonal antibody recognizes TWF1 / PTK9
Tested Reactivity	Hu, Ms
Tested Application	WB
Host	Rabbit
Clonality	Polyclonal
Isotype	IgG
Target Name	TWF1 / PTK9
Species	Human
Immunogen	Recombinant fusion protein corresponding to aa. 101-350 of Human TWF1 (NP_002813.3).
Conjugation	Un-conjugated
Alternate Names	A6; PTK9

### Application Instructions

Application table	Application	Dilution
	WB	1:200 - 1:2000
Application Note	* The dilutions indicate recommended starting dilutions and the optimal dilutions or concentrations should be determined by the scientist.	
Positive Control	DU145	
Observed Size	40 kDa	

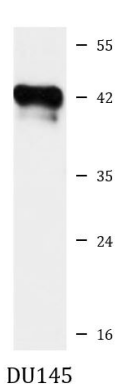
### Properties

Form	Liquid
Purification	Affinity purified.
Buffer	PBS (pH 7.3), 0.02% Sodium azide and 50% Glycerol.
Preservative	0.02% Sodium azide
Stabilizer	50% Glycerol
Storage instruction	For continuous use, store undiluted antibody at 2-8°C for up to a week. For long-term storage, aliquot and store at -20°C. Storage in frost free freezers is not recommended. Avoid repeated freeze/thaw cycles. Suggest spin the vial prior to opening. The antibody solution should be gently mixed before use.
Note	For laboratory research only, not for drug, diagnostic or other use.

Bioinformation

Gene Symbol	TWF1
Gene Full Name	twinfilin actin binding protein 1
Background	This gene encodes twinfilin, an actin monomer-binding protein conserved from yeast to mammals. Studies of the mouse counterpart suggest that this protein may be an actin monomer-binding protein, and its localization to cortical G-actin-rich structures may be regulated by the small GTPase RAC1. [provided by RefSeq, Jul 2008]
Function	Actin-binding protein involved in motile and morphological processes. Inhibits actin polymerization, likely by sequestering G-actin. By capping the barbed ends of filaments, it also regulates motility. Seems to play an important role in clathrin-mediated endocytosis and distribution of endocytic organelles (By similarity). [UniProt]
Calculated Mw	40 kDa
Cellular Localization	Cytoplasm, cytoskeleton. [UniProt]

Images



ARG57909 anti-TWF1 / PTK9 antibody WB image

Western blot: 25 µg of DU145 cell lysate stained with ARG57909 anti-TWF1 / PTK9 antibody at 1:1000 dilution.