

## ARG58025 anti-FLI1 antibody [FLVI1-1]

Package: 50 µg  
Store at: -20°C

### Summary

Product Description	Mouse Monoclonal antibody [FLVI1-1] recognizes FLI1
Tested Reactivity	Hu
Tested Application	WB
Host	Mouse
Clonality	Monoclonal
Clone	FLVI1-1
Isotype	IgG
Target Name	FLI1
Species	Human
Immunogen	Partial recombinant protein corresponding to aa. 107-216 of Human FLI1.
Conjugation	Un-conjugated
Alternate Names	SIC-1; Friend leukemia integration 1 transcription factor; Proto-oncogene Fli-1; EWSR2; Transcription factor ERGB

### Application Instructions

Application table	Application	Dilution
	WB	1 - 2 µg/ml
Application Note	* The dilutions indicate recommended starting dilutions and the optimal dilutions or concentrations should be determined by the scientist.	

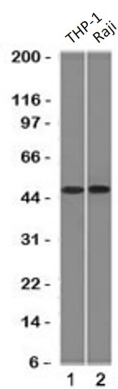
### Properties

Form	Liquid
Purification	Purification with Protein G.
Buffer	PBS (pH 7.4), 0.05% Sodium azide and 0.1 mg/ml BSA.
Preservative	0.05% Sodium azide
Stabilizer	0.1 mg/ml BSA
Concentration	0.2 mg/ml
Storage instruction	For continuous use, store undiluted antibody at 2-8°C for up to a week. For long-term storage, aliquot and store at -20°C or below. Storage in frost free freezers is not recommended. Avoid repeated freeze/thaw cycles. Suggest spin the vial prior to opening. The antibody solution should be gently mixed before use.
Note	For laboratory research only, not for drug, diagnostic or other use.

Bioinformation

Gene Symbol	FLI1
Gene Full Name	Fli-1 proto-oncogene, ETS transcription factor
Background	This gene encodes a transcription factor containing an ETS DNA-binding domain. The gene can undergo a t(11;22)(q24;q12) translocation with the Ewing sarcoma gene on chromosome 22, which results in a fusion gene that is present in the majority of Ewing sarcoma cases. An acute lymphoblastic leukemia-associated t(4;11)(q21;q23) translocation involving this gene has also been identified. Alternative splicing results in multiple transcript variants. [provided by RefSeq, Aug 2012]
Function	Sequence-specific transcriptional activator. Recognizes the DNA sequence 5'-C[CA]GGAAGT-3'. [UniProt]
Calculated Mw	51 kDa

Images



ARG58025 anti-FLI1 antibody [FLVI1-1] WB image

Western blot: 1) THP-1 and 2) Raji cell lysates stained with ARG58025 anti-FLI1 antibody [FLVI1-1].