

## ARG58027 anti-MFGE8 / Lactadherin antibody

Package: 50 µg  
Store at: -20°C

### Summary

Product Description	Rabbit Polyclonal antibody recognizes MFGE8 / Lactadherin
Tested Reactivity	Hu
Tested Application	IHC-P, WB
Host	Rabbit
Clonality	Polyclonal
Isotype	IgG
Target Name	MFGE8 / Lactadherin
Species	Human
Immunogen	Synthetic peptide around the middle region of Human MFGE8. (NGHEFDIHDVNKKHK)
Conjugation	Un-conjugated
Alternate Names	SPAG10; MFGM; HsT19888; HMFG; Milk fat globule-EGF factor 8; MFG-E8; BA46; hP47; EDIL1; Lactadherin; OAcGD3S; Breast epithelial antigen BA46; SED1

### Application Instructions

Application table	Application	Dilution
	IHC-P	1 - 5 µg/ml
	WB	0.5 - 1 µg/ml
Application Note	* The dilutions indicate recommended starting dilutions and the optimal dilutions or concentrations should be determined by the scientist.	

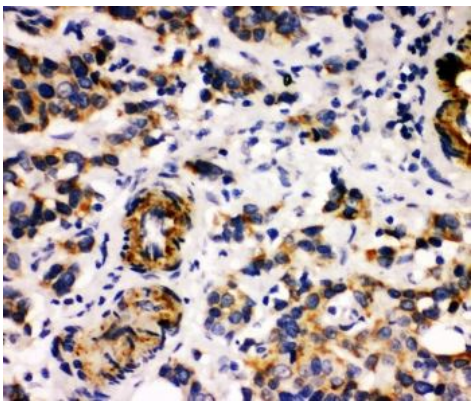
### Properties

Form	Liquid
Purification	Affinity purification with immunogen.
Buffer	PBS, 0.025% Sodium azide and 2.5% BSA.
Preservative	0.025% Sodium azide
Stabilizer	2.5% BSA
Concentration	0.5 mg/ml
Storage instruction	For continuous use, store undiluted antibody at 2-8°C for up to a week. For long-term storage, aliquot and store at -20°C or below. Storage in frost free freezers is not recommended. Avoid repeated freeze/thaw cycles. Suggest spin the vial prior to opening. The antibody solution should be gently mixed before use.
Note	For laboratory research only, not for drug, diagnostic or other use.

Bioinformation

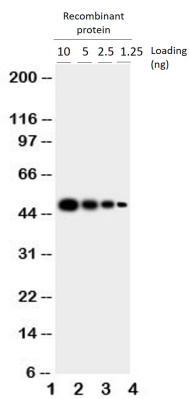
Gene Symbol	MFGE8
Gene Full Name	milk fat globule-EGF factor 8 protein
Background	This gene encodes a preproprotein that is proteolytically processed to form multiple protein products. The major encoded protein product, lactadherin, is a membrane glycoprotein that promotes phagocytosis of apoptotic cells. This protein has also been implicated in wound healing, autoimmune disease, and cancer. Lactadherin can be further processed to form a smaller cleavage product, medin, which comprises the major protein component of aortic medial amyloid (AMA). Alternative splicing results in multiple transcript variants. [provided by RefSeq, Jul 2015]
Function	<p>Plays an important role in the maintenance of intestinal epithelial homeostasis and the promotion of mucosal healing. Promotes VEGF-dependent neovascularization (By similarity). Contributes to phagocytic removal of apoptotic cells in many tissues. Specific ligand for the alpha-v/beta-3 and alpha-v/beta-5 receptors. Also binds to phosphatidylserine-enriched cell surfaces in a receptor-independent manner. Zona pellucida-binding protein which may play a role in gamete interaction. Binds specifically to rotavirus and inhibits its replication.</p> <p>Medin is the main constituent of aortic medial amyloid. [UniProt]</p>
Calculated Mw	43 kDa
PTM	Medin has a ragged N-terminus with minor species starting at Pro-264 and Gly-273. [UniProt]

Images



ARG58027 anti-MFGE8 / Lactadherin antibody IHC-P image

Immunohistochemistry: Paraffin-embedded Human breast cancer tissue stained with ARG58027 anti-MFGE8 / Lactadherin antibody.



ARG58027 anti-MFGE8 / Lactadherin antibody WB image

Western blot: 1) 10 ng, 2) 5 ng, 3) 2.5 ng and 4) 1.25 ng of recombinant Human protein stained with ARG58027 anti-MFGE8 / Lactadherin antibody.