

## ARG58032 anti-GCLC antibody

Package: 50 µg  
Store at: -20°C

### Summary

Product Description	Rabbit Polyclonal antibody recognizes GCLC
Tested Reactivity	Hu, Rat
Tested Application	IHC-P, WB
Host	Rabbit
Clonality	Polyclonal
Isotype	IgG
Target Name	GCLC
Species	Human
Immunogen	Partial recombinant protein corresponding to aa. 437-637 of Human GCLC.
Conjugation	Un-conjugated
Alternate Names	GCS heavy chain; Gamma-glutamylcysteine synthetase; Gamma-ECS; GCL; GLCL; GCS; Glutamate--cysteine ligase catalytic subunit; EC 6.3.2.2; GLCLC

### Application Instructions

Application table	Application	Dilution
	IHC-P	1 - 5 µg/ml
	WB	0.5 - 1 µg/ml
Application Note	* The dilutions indicate recommended starting dilutions and the optimal dilutions or concentrations should be determined by the scientist.	
Observed Size	~ 72 kDa	

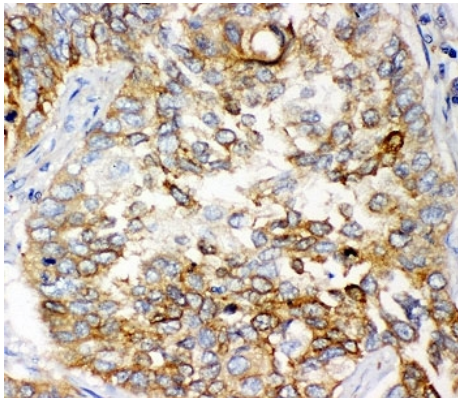
### Properties

Form	Liquid
Purification	Affinity purification with immunogen.
Buffer	PBS, 0.025% Sodium azide and 2.5% BSA.
Preservative	0.025% Sodium azide
Stabilizer	2.5% BSA
Concentration	0.5 mg/ml
Storage instruction	For continuous use, store undiluted antibody at 2-8°C for up to a week. For long-term storage, aliquot and store at -20°C or below. Storage in frost free freezers is not recommended. Avoid repeated freeze/thaw cycles. Suggest spin the vial prior to opening. The antibody solution should be gently mixed before use.

Bioinformation

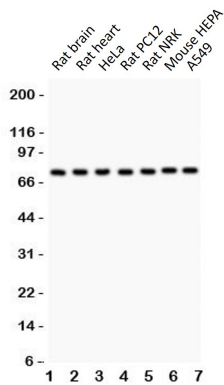
Gene Symbol	GCLC
Gene Full Name	glutamate-cysteine ligase, catalytic subunit
Background	Glutamate-cysteine ligase, also known as gamma-glutamylcysteine synthetase is the first rate-limiting enzyme of glutathione synthesis. The enzyme consists of two subunits, a heavy catalytic subunit and a light regulatory subunit. This locus encodes the catalytic subunit, while the regulatory subunit is derived from a different gene located on chromosome 1p22-p21. Mutations at this locus have been associated with hemolytic anemia due to deficiency of gamma-glutamylcysteine synthetase and susceptibility to myocardial infarction.[provided by RefSeq, Oct 2010]
Calculated Mw	73 kDa

Images



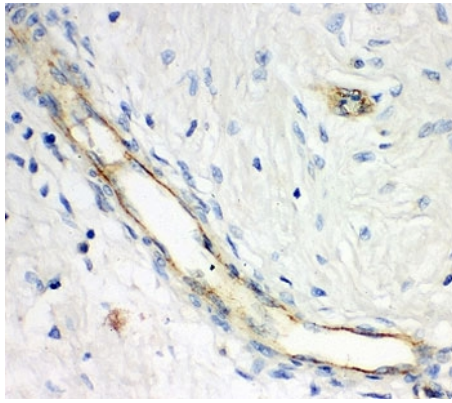
ARG58032 anti-GCLC antibody IHC-P image

Immunohistochemistry: Paraffin-embedded Human lung cancer tissue stained with ARG58032 anti-GCLC antibody.



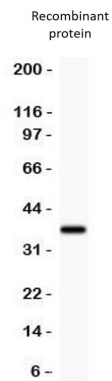
ARG58032 anti-GCLC antibody WB image

Western blot: 1) Rat brain, 2) Rat heart, 3) HeLa, 4) Rat PC12, 5) Rat NRK, 6) Mouse HEPA and 7) A549 cell lysates stained with ARG58032 anti-GCLC antibody.



ARG58032 anti-GCLC antibody IHC-P image

Immunohistochemistry: Paraffin-embedded Human breast cancer tissue stained with ARG58032 anti-GCLC antibody.



ARG58032 anti-GCLC antibody WB image

Western blot: 0.5 ng of recombinant Human protein stained with ARG58032 anti-GCLC antibody.