

ARG58085 anti-Claudin 3 antibody

Package: 100 µl
Store at: -20°C

Summary

Product Description	Rabbit Polyclonal antibody recognizes Claudin 3
Tested Reactivity	Hu, Ms
Tested Application	ICC/IF, WB
Host	Rabbit
Clonality	Polyclonal
Isotype	IgG
Target Name	Claudin 3
Species	Human
Immunogen	Recombinant protein of Human Claudin 3.
Conjugation	Un-conjugated
Alternate Names	CPE-R2; CPE-receptor 2; RVP1; HRVP1; CPE-R 2; CPETR2; hRVP1; C7orf1; Clostridium perfringens enterotoxin receptor 2; Rat ventral prostate.1 protein homolog; Claudin-3

Application Instructions

Application table	Application	Dilution
	ICC/IF	1:50 - 1:200
	WB	1:500 - 1:2000
Application Note	* The dilutions indicate recommended starting dilutions and the optimal dilutions or concentrations should be determined by the scientist.	
Positive Control	HT-29	
Observed Size	21 kDa	

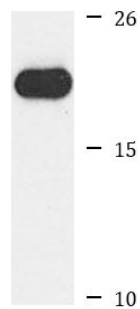
Properties

Form	Liquid
Purification	Affinity purified.
Buffer	PBS (pH 7.3), 0.02% Sodium azide and 50% Glycerol.
Preservative	0.02% Sodium azide
Stabilizer	50% Glycerol
Storage instruction	For continuous use, store undiluted antibody at 2-8°C for up to a week. For long-term storage, aliquot and store at -20°C. Storage in frost free freezers is not recommended. Avoid repeated freeze/thaw cycles. Suggest spin the vial prior to opening. The antibody solution should be gently mixed before use.
Note	For laboratory research only, not for drug, diagnostic or other use.

Bioinformation

Gene Symbol	CLDN3
Gene Full Name	claudin 3
Background	Tight junctions represent one mode of cell-to-cell adhesion in epithelial or endothelial cell sheets, forming continuous seals around cells and serving as a physical barrier to prevent solutes and water from passing freely through the paracellular space. These junctions are comprised of sets of continuous networking strands in the outwardly facing cytoplasmic leaflet, with complementary grooves in the inwardly facing extracytoplasmic leaflet. The protein encoded by this intronless gene, a member of the claudin family, is an integral membrane protein and a component of tight junction strands. It is also a low-affinity receptor for <i>Clostridium perfringens</i> enterotoxin, and shares aa sequence similarity with a putative apoptosis-related protein found in rat. [provided by RefSeq, Jul 2008]
Function	Plays a major role in tight junction-specific obliteration of the intercellular space, through calcium-independent cell-adhesion activity. [UniProt]
Calculated Mw	23 kDa
Cellular Localization	Cell junction, tight junction, Cell membrane, Multi-pass membrane protein. [UniProt]

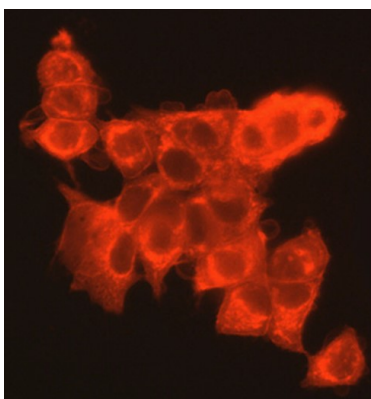
Images



HT-29

ARG58085 anti-Claudin 3 antibody WB image

Western blot: 25 µg of HT-29 cell lysate stained with ARG58085 anti-Claudin 3 antibody at 1:400 dilution.



ARG58085 anti-Claudin 3 antibody ICC/IF image

Immunofluorescence: MCF7 cells stained with ARG58085 anti-Claudin 3 antibody at 1:100 dilution.