

**ARG58137**  
**anti-PU.1 antibody**Package: 50 µg  
Store at: -20°C**Summary**

Product Description	Rabbit Polyclonal antibody recognizes PU.1
Tested Reactivity	Hu, Ms, Rat
Tested Application	IHC-P
Host	Rabbit
Clonality	Polyclonal
Isotype	IgG
Target Name	PU.1
Species	Human
Immunogen	Synthetic peptide corresponding to aa. 18-196 of Human PU.1.
Conjugation	Un-conjugated
Alternate Names	Transcription factor PU.1; SPI-1; OF; SPI-A; PU.1; SFPI1; 31 kDa-transforming protein

**Application Instructions**

Application table	Application	Dilution
	IHC-P	0.5 - 1 µg/ml
Application Note	IHC-P: Antigen Retrieval: Boil tissue section in 10mM Citrate buffer (pH 6.0) for 20 min followed by cooling at RT. * The dilutions indicate recommended starting dilutions and the optimal dilutions or concentrations should be determined by the scientist.	

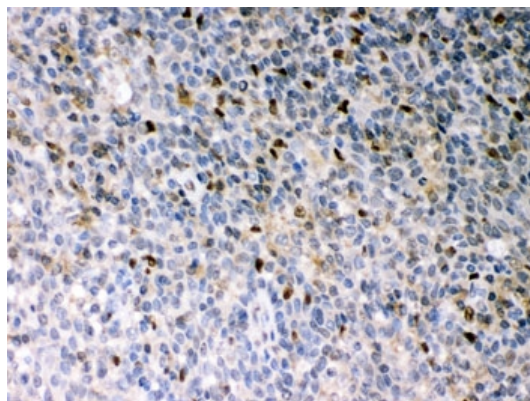
**Properties**

Form	Liquid
Purification	Affinity purification with immunogen.
Buffer	PBS, 0.025% Sodium azide and 2.5% BSA.
Preservative	0.025% Sodium azide
Stabilizer	2.5% BSA
Concentration	0.5 mg/ml
Storage instruction	For continuous use, store undiluted antibody at 2-8°C for up to a week. For long-term storage, aliquot and store at -20°C or below. Storage in frost free freezers is not recommended. Avoid repeated freeze/thaw cycles. Suggest spin the vial prior to opening. The antibody solution should be gently mixed before use.
Note	For laboratory research only, not for drug, diagnostic or other use.

## Bioinformation

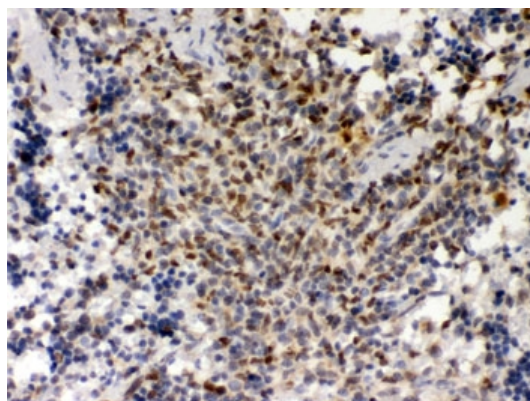
Gene Symbol	SPI1
Gene Full Name	Spi-1 proto-oncogene
Background	This gene encodes an ETS-domain transcription factor that activates gene expression during myeloid and B-lymphoid cell development. The nuclear protein binds to a purine-rich sequence known as the PU-box found near the promoters of target genes, and regulates their expression in coordination with other transcription factors and cofactors. The protein can also regulate alternative splicing of target genes. Multiple transcript variants encoding different isoforms have been found for this gene. [provided by RefSeq, Jul 2008]
Function	Binds to the PU-box, a purine-rich DNA sequence (5'-GAGGAA-3') that can act as a lymphoid-specific enhancer. This protein is a transcriptional activator that may be specifically involved in the differentiation or activation of macrophages or B-cells. Also binds RNA and may modulate pre-mRNA splicing (By similarity). [UniProt]
Calculated Mw	31 kDa
Cellular Localization	Nuclear. [UniProt]

## Images



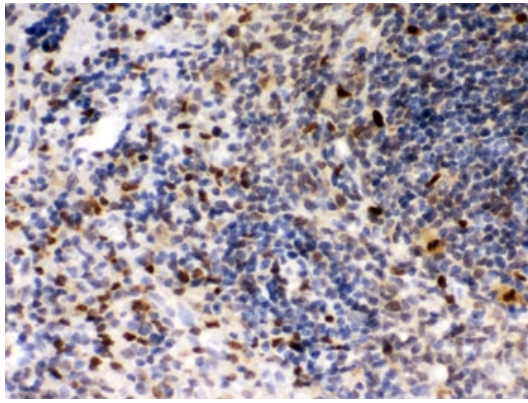
ARG58137 anti-PU.1 antibody IHC-P image

Immunohistochemistry: Formalin-fixed and paraffin-embedded Human tonsil stained with ARG58137 anti-PU.1 antibody. Antigen Retrieval: Boil tissue section in 10mM Citrate buffer (pH 6.0) for 20 min followed by cooling at RT.



ARG58137 anti-PU.1 antibody IHC-P image

Immunohistochemistry: Formalin-fixed and paraffin-embedded Mouse spleen stained with ARG58137 anti-PU.1 antibody. Antigen Retrieval: Boil tissue section in 10mM Citrate buffer (pH 6.0) for 20 min followed by cooling at RT.



ARG58137 anti-PU.1 antibody IHC-P image

Immunohistochemistry: Formalin-fixed and paraffin-embedded Rat spleen stained with ARG58137 anti-PU.1 antibody. Antigen Retrieval: Boil tissue section in 10mM Citrate buffer (pH 6.0) for 20 min followed by cooling at RT.