

ARG58217 anti-Aquaporin 6 antibody

Package: 50 µg
Store at: -20°C

Summary

Product Description	Rabbit Polyclonal antibody recognizes Aquaporin 6
Tested Reactivity	Hu
Tested Application	IHC-P, WB
Host	Rabbit
Clonality	Polyclonal
Isotype	IgG
Target Name	Aquaporin 6
Species	Human
Immunogen	Synthetic peptide corresponding to a sequence at the C-terminus of Human Aquaporin 6(264-282aa EPLKKEQPGSGAVEMESV).
Conjugation	Un-conjugated
Alternate Names	Aquaporin-6; AQP2L; AQP-6; hKID; Kidney-specific aquaporin; Aquaporin-2-like; KID

Application Instructions

Application table	Application	Dilution
	IHC-P	0.5 - 1 µg/ml
	WB	0.1 - 0.5 µg/ml
Application Note	IHC-P: Antigen Retrieval: By heat mediation. * The dilutions indicate recommended starting dilutions and the optimal dilutions or concentrations should be determined by the scientist.	

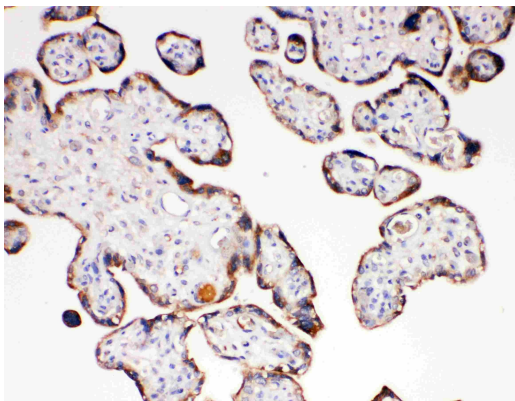
Properties

Form	Liquid
Purification	Affinity purification with immunogen.
Buffer	0.9% NaCl, 0.2% Na ₂ HPO ₄ , 0.05% Thimerosal, 0.05% Sodium azide and 5% BSA.
Preservative	0.05% Thimerosal and 0.05% Sodium azide
Stabilizer	5% BSA
Concentration	0.5 mg/ml
Storage instruction	For continuous use, store undiluted antibody at 2-8°C for up to a week. For long-term storage, aliquot and store at -20°C or below. Storage in frost free freezers is not recommended. Avoid repeated freeze/thaw cycles. Suggest spin the vial prior to opening. The antibody solution should be gently mixed before use.
Note	For laboratory research only, not for drug, diagnostic or other use.

Bioinformation

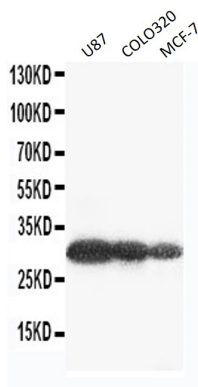
Gene Symbol	AQP6
Gene Full Name	aquaporin 6, kidney specific
Background	The protein encoded by this gene is an aquaporin protein, which functions as a water channel in cells. Aquaporins are a family of small integral membrane proteins related to the major intrinsic protein (MIP or AQP0). This protein is specific for the kidney. This gene and related family members AQP0, AQP2, and AQP5 reside in a cluster on chromosome 12q13. [provided by RefSeq, Jul 2008]
Function	Forms a water-specific channel that participates in distinct physiological functions such as glomerular filtration, tubular endocytosis and acid-base metabolism. [UniProt]
Calculated Mw	29 kDa
Cellular Localization	Cytoplasmic vesicle membrane; Multi-pass membrane protein. [UniProt]

Images



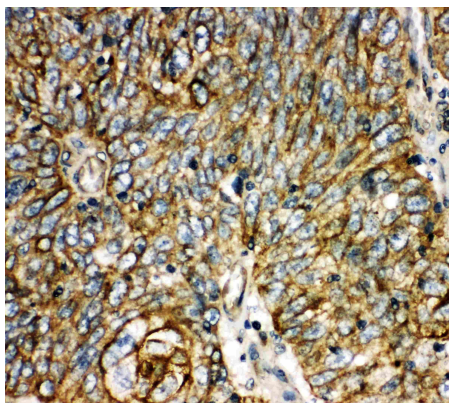
ARG58217 anti-Aquaporin 6 antibody IHC-P image

Immunohistochemistry: Paraffin-embedded Human placenta stained with ARG58217 anti-Aquaporin 6 antibody.



ARG58217 anti-Aquaporin 6 antibody WB image

Western blot: U87, COLO320 and MCF-7 cell lysates stained with ARG58217 anti-Aquaporin 6 antibody.



ARG58217 anti-Aquaporin 6 antibody IHC-P image

Immunohistochemistry: Paraffin-embedded Human lung cancer stained with ARG58217 anti-Aquaporin 6 antibody.