

ARG58222 anti-ABR antibody

Package: 50 µg
Store at: -20°C

Summary

Product Description	Rabbit Polyclonal antibody recognizes ABR
Tested Reactivity	Hu, Ms, Rat
Tested Application	IHC-P, WB
Host	Rabbit
Clonality	Polyclonal
Isotype	IgG
Target Name	ABR
Species	Human
Immunogen	Synthetic peptide corresponding to aa. 370-407 of Human ABR. (HPFPDHELEDMKMKISALKSEIQKEKANKGQSRAIERL)
Conjugation	Un-conjugated
Alternate Names	MDB; Active breakpoint cluster region-related protein

Application Instructions

Application table	Application	Dilution
	IHC-P	0.5 - 1 µg/ml
	WB	0.1 - 0.5 µg/ml
Application Note	IHC-P: Antigen Retrieval: By heat mediation. * The dilutions indicate recommended starting dilutions and the optimal dilutions or concentrations should be determined by the scientist.	

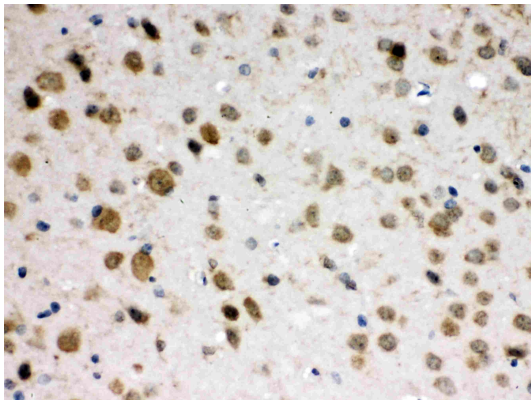
Properties

Form	Liquid
Purification	Affinity purification with immunogen.
Buffer	0.9% NaCl, 0.2% Na ₂ HPO ₄ , 0.05% Sodium azide and 5% BSA.
Preservative	0.05% Sodium azide
Stabilizer	5% BSA
Concentration	0.5 mg/ml
Storage instruction	For continuous use, store undiluted antibody at 2-8°C for up to a week. For long-term storage, aliquot and store at -20°C or below. Storage in frost free freezers is not recommended. Avoid repeated freeze/thaw cycles. Suggest spin the vial prior to opening. The antibody solution should be gently mixed before use.
Note	For laboratory research only, not for drug, diagnostic or other use.

Bioinformation

Gene Symbol	ABR
Gene Full Name	active BCR-related
Background	This gene encodes a protein that is similar to the protein encoded by the breakpoint cluster region gene located on chromosome 22. The protein encoded by this gene contains a GTPase-activating protein domain, a domain found in members of the Rho family of GTP-binding proteins. Functional studies in mice determined that this protein plays a role in vestibular morphogenesis. Alternatively spliced transcript variants have been reported for this gene. [provided by RefSeq, Feb 2012]
Function	GTPase-activating protein for RAC and CDC42. Promotes the exchange of RAC or CDC42-bound GDP by GTP, thereby activating them. [UniProt]
Calculated Mw	98 kDa

Images



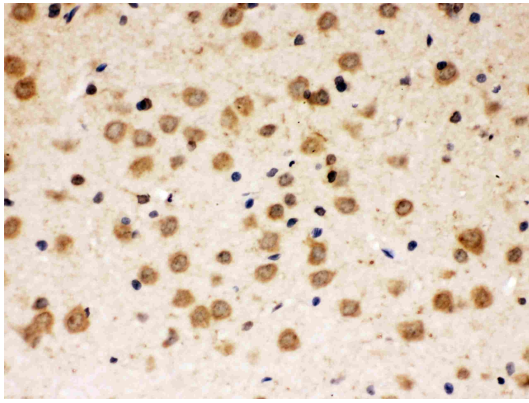
ARG58222 anti-ABR antibody IHC-P image

Immunohistochemistry: Paraffin-embedded Mouse brain stained with ARG58222 anti-ABR antibody at 1 µg/ml dilution.



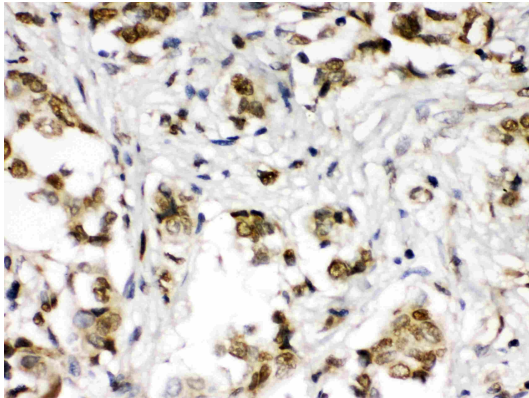
ARG58222 anti-ABR antibody WB image

Western blot: Rat brain and Mouse brain extracts stained with ARG58222 anti-ABR antibody at 0.5 µg/ml dilution.



ARG58222 anti-ABR antibody IHC-P image

Immunohistochemistry: Paraffin-embedded Rat brain stained with ARG58222 anti-ABR antibody at 1 μ g/ml dilution.



ARG58222 anti-ABR antibody IHC-P image

Immunohistochemistry: Paraffin-embedded Human mammary cancer stained with ARG58222 anti-ABR antibody at 1 μ g/mL dilution.