

ARG58288 anti-NDUFA10 antibody

Package: 100 µl
Store at: -20°C

Summary

| | |
|---------------------|---|
| Product Description | Rabbit Polyclonal antibody recognizes NDUFA10 |
| Tested Reactivity | Hu |
| Tested Application | FACS, WB |
| Host | Rabbit |
| Clonality | Polyclonal |
| Isotype | IgG |
| Target Name | NDUFA10 |
| Species | Human |
| Immunogen | KLH-conjugated synthetic peptide corresponding to aa. 252-281 (Center) of Human NDUFA10. |
| Conjugation | Un-conjugated |
| Alternate Names | NADH-ubiquinone oxidoreductase 42 kDa subunit; NADH dehydrogenase [ubiquinone] 1 alpha subcomplex subunit 10, mitochondrial; CI-42k; CI-42KD; Complex I-42kD; CI-42kD |

Application Instructions

| | | |
|-------------------|--|-------------|
| Application table | Application | Dilution |
| | FACS | 1:10 - 1:50 |
| | WB | 1:1000 |
| Application Note | * The dilutions indicate recommended starting dilutions and the optimal dilutions or concentrations should be determined by the scientist. | |
| Positive Control | Mouse kidney | |

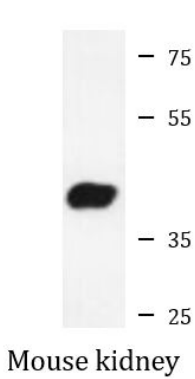
Properties

| | |
|---------------------|--|
| Form | Liquid |
| Purification | Purification with Protein A and immunogen peptide. |
| Buffer | PBS and 0.09% (W/V) Sodium azide. |
| Preservative | 0.09% (W/V) Sodium azide. |
| Storage instruction | For continuous use, store undiluted antibody at 2-8°C for up to a week. For long-term storage, aliquot and store at -20°C or below. Storage in frost free freezers is not recommended. Avoid repeated freeze/thaw cycles. Suggest spin the vial prior to opening. The antibody solution should be gently mixed before use. |
| Note | For laboratory research only, not for drug, diagnostic or other use. |

Bioinformation

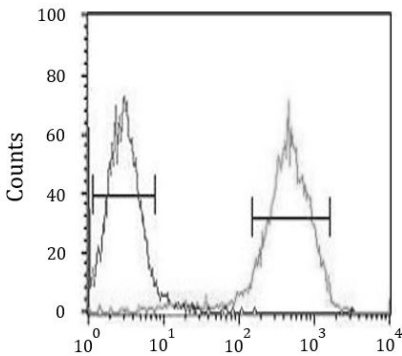
| | |
|-----------------------|--|
| Gene Symbol | NDUFA10 |
| Gene Full Name | NADH dehydrogenase (ubiquinone) 1 alpha subcomplex, 10, 42kDa |
| Background | The protein encoded by this gene belongs to the complex I 42kDA subunit family. Mammalian complex I is the first enzyme complex in the electron transport chain of mitochondria. It is composed of 45 different subunits. This protein is a component of the hydrophobic protein fraction and has NADH dehydrogenase activity and oxidoreductase activity. It transfers electrons from NADH to the respiratory chain. [provided by RefSeq, Jul 2008] |
| Function | Accessory subunit of the mitochondrial membrane respiratory chain NADH dehydrogenase (Complex I), that is believed not to be involved in catalysis. Complex I functions in the transfer of electrons from NADH to the respiratory chain. The immediate electron acceptor for the enzyme is believed to be ubiquinone. [UniProt] |
| Calculated Mw | 41 kDa |
| Cellular Localization | Mitochondrion matrix. [UniProt] |

Images



ARG58288 anti-NDUFA10 antibody WB image

Western blot: 35 µg of Mouse kidney lysate stained with ARG58288 anti-NDUFA10 antibody.



ARG58288 anti-NDUFA10 antibody FACS image

Flow Cytometry: HepG2 cells stained with ARG58288 anti-NDUFA10 antibody (right histogram) or without primary antibody as control (left histogram), followed by incubation with FITC labelled secondary antibody.