

## ARG58382 anti-CKS2 antibody

Package: 100 µl  
Store at: -20°C

### Summary

Product Description	Rabbit Polyclonal antibody recognizes CKS2
Tested Reactivity	Rat
Tested Application	WB
Host	Rabbit
Clonality	Polyclonal
Isotype	IgG
Target Name	CKS2
Species	Human
Immunogen	Recombinant fusion protein corresponding to aa. 1-79 of Human CKS2 (NP_001818.1).
Conjugation	Un-conjugated
Alternate Names	CKS-2; Cyclin-dependent kinases regulatory subunit 2; CKSHS2

### Application Instructions

Application table	Application	Dilution
	WB	1:200 - 1:2000
Application Note	* The dilutions indicate recommended starting dilutions and the optimal dilutions or concentrations should be determined by the scientist.	
Positive Control	Rat liver	
Observed Size	14 kDa	

### Properties

Form	Liquid
Purification	Affinity purified.
Buffer	PBS (pH 7.3), 0.02% Sodium azide and 50% Glycerol.
Preservative	0.02% Sodium azide
Stabilizer	50% Glycerol
Storage instruction	For continuous use, store undiluted antibody at 2-8°C for up to a week. For long-term storage, aliquot and store at -20°C. Storage in frost free freezers is not recommended. Avoid repeated freeze/thaw cycles. Suggest spin the vial prior to opening. The antibody solution should be gently mixed before use.
Note	For laboratory research only, not for drug, diagnostic or other use.

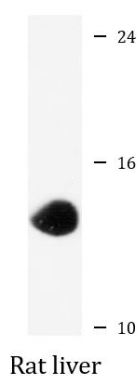
## Bioinformation

---

Gene Symbol	CKS2
Gene Full Name	CDC28 protein kinase regulatory subunit 2
Background	CKS2 protein binds to the catalytic subunit of the cyclin dependent kinases and is essential for their biological function. The CKS2 mRNA is found to be expressed in different patterns through the cell cycle in HeLa cells, which reflects specialized role for the encoded protein. [provided by RefSeq, Jul 2008]
Function	Binds to the catalytic subunit of the cyclin dependent kinases and is essential for their biological function. [UniProt]
Calculated Mw	10 kDa

## Images

---



ARG58382 anti-CKS2 antibody WB image

Western blot: 25 µg of Rat liver lysate stained with ARG58382 anti-CKS2 antibody at 1:1000 dilution.