

## ARG58395 anti-CRIP1 antibody

Package: 100 µl  
Store at: -20°C

### Summary

Product Description	Rabbit Polyclonal antibody recognizes CRIP1
Tested Reactivity	Hu, Ms
Tested Application	WB
Host	Rabbit
Clonality	Polyclonal
Isotype	IgG
Target Name	CRIP1
Species	Human
Immunogen	Recombinant fusion protein corresponding to aa. 1-77 of Human CRIP1 (NP_001302.1).
Conjugation	Un-conjugated
Alternate Names	hCRHP; Cysteine-rich intestinal protein; Cysteine-rich heart protein; CRP1; Cysteine-rich protein 1; CRIP; CRP-1; CRHP

### Application Instructions

Application table	Application	Dilution
	WB	1:500 - 1:2000
Application Note	* The dilutions indicate recommended starting dilutions and the optimal dilutions or concentrations should be determined by the scientist.	
Positive Control	Mouse lung	
Observed Size	13 kDa	

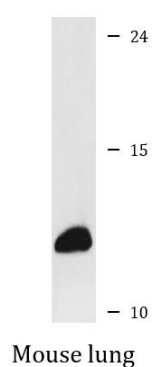
### Properties

Form	Liquid
Purification	Affinity purified.
Buffer	PBS (pH 7.3), 0.02% Sodium azide and 50% Glycerol.
Preservative	0.02% Sodium azide
Stabilizer	50% Glycerol
Storage instruction	For continuous use, store undiluted antibody at 2-8°C for up to a week. For long-term storage, aliquot and store at -20°C. Storage in frost free freezers is not recommended. Avoid repeated freeze/thaw cycles. Suggest spin the vial prior to opening. The antibody solution should be gently mixed before use.
Note	For laboratory research only, not for drug, diagnostic or other use.

## Bioinformation

Gene Symbol	CRIP1
Gene Full Name	cysteine-rich protein 1 (intestinal)
Background	Cysteine-rich intestinal protein (CRIP) belongs to the LIM/double zinc finger protein family, members of which include cysteine- and glycine-rich protein-1 (CSRP1; MIM 123876), rhombotin-1 (RBTN1; MIM 186921), rhombotin-2 (RBTN2; MIM 180385), and rhombotin-3 (RBTN3; MIM 180386). CRIP may be involved in intestinal zinc transport (Hempe and Cousins, 1991 [PubMed 1946385]).[supplied by OMIM, Mar 2008]
Function	Seems to have a role in zinc absorption and may function as an intracellular zinc transport protein. [UniProt]
Calculated Mw	9 kDa

## Images



ARG58395 anti-CRIP1 antibody WB image

Western blot: 25 µg of Mouse lung lysate stained with ARG58395 anti-CRIP1 antibody at 1:1000 dilution.