

ARG58411
anti-CHAD antibodyPackage: 50 µl
Store at: -20°C

Summary

Product Description	Rabbit Polyclonal antibody recognizes CHAD
Tested Reactivity	Hu
Tested Application	WB
Host	Rabbit
Clonality	Polyclonal
Isotype	IgG
Target Name	CHAD
Species	Human
Immunogen	Recombinant fusion protein corresponding to aa. 1-359 of Human CHAD (NP_001258.2).
Conjugation	Un-conjugated
Alternate Names	Cartilage leucine-rich protein; Chondroadherin; SLRR4A

Application Instructions

Application table	Application	Dilution
	WB	1:500 - 1:2000
Application Note	* The dilutions indicate recommended starting dilutions and the optimal dilutions or concentrations should be determined by the scientist.	
Positive Control	U-251MG	
Observed Size	40 kDa	

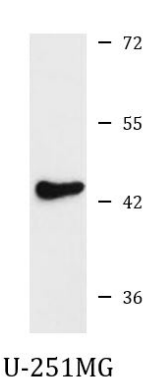
Properties

Form	Liquid
Purification	Affinity purified.
Buffer	PBS (pH 7.3), 0.02% Sodium azide and 50% Glycerol.
Preservative	0.02% Sodium azide
Stabilizer	50% Glycerol
Storage instruction	For continuous use, store undiluted antibody at 2-8°C for up to a week. For long-term storage, aliquot and store at -20°C. Storage in frost free freezers is not recommended. Avoid repeated freeze/thaw cycles. Suggest spin the vial prior to opening. The antibody solution should be gently mixed before use.
Note	For laboratory research only, not for drug, diagnostic or other use.

Bioinformation

Gene Symbol	CHAD
Gene Full Name	chondroadherin
Background	Chondroadherin is a cartilage matrix protein thought to mediate adhesion of isolated chondrocytes. The protein contains 11 leucine-rich repeats flanked by cysteine-rich regions. The chondroadherin messenger RNA is present in chondrocytes at all ages. [provided by RefSeq, Jul 2008]
Function	Promotes attachment of chondrocytes, fibroblasts, and osteoblasts. This binding is mediated (at least for chondrocytes and fibroblasts) by the integrin alpha(2)beta(1). May play an important role in the regulation of chondrocyte growth and proliferation (By similarity). [UniProt]
Calculated Mw	40 kDa
Cellular Localization	Secreted, extracellular matrix, extracellular space,. [UniProt]

Images



ARG58411 anti-CHAD antibody WB image

Western blot: 25 µg of U-251MG cell lysate stained with ARG58411 anti-CHAD antibody at 1:1000 dilution.